

# HIGHWAY MAINTENANCE SERVICES

## WINTER MAINTENANCE MANUAL

2009 / 2010



**Richard White**  
**Assistant Director**  
**Neighbourhood Services**  
**EcoDepot**  
**Hazel Court**  
**YORK**  
**YO10 3DS**

**OCTOBER 2009**

## CONTENTS

1. STATEMENT OF SERVICE
2. ROLES AND COMMUNICATION
3. OPERATIONAL PROCEDURE
4. EQUIPMENT
5. MATERIALS
6. WEATHER FORECASTING
7. SPECIFICATION
8. SEVERE WEATHER CONTROL ROOM
9. CROSS BOUNDARY ARRANGEMENTS

### ANNEXES

- 1 WINTER MAINTENANCE DUTY OFFICER ROTA
- 2 OPERATIONS INSTRUCTION FORM
- 3 DEPT. OF TRANSPORT CIRCULAR ROADS No 18/77
- 4 TREATMENT LOG
- 5 NETWORK TREATMENT ROUTE
- 6 PRIORITY SNOW CLEARING NETWORK
- 7 ROUTE MAPS
- 8 STREETS INCLUDED ON GRITTING ROUTE
- 9 DESCRIPTIVE GRITTING ROUTES
- 10 FOOTWAY SNOW CLEARANCE AND PRECAUTIONARY TREATMENT
- 11 SCHEDULE OF SALT BIN LOCATIONS
- 12 SCHEDULE OF CYCLE PATH/WAYS TREATMENT
- 13 DECISION MAKING FLOW CHARTS
- 14 WINTER EMERGENCY CONTROL ROOM – OPERATIONS MANUAL  
(NOTE: RESTRICTED CIRCULATION DOCUMENT)
- 15 WEATHER STATION LOCATION PLAN – SEE ATTACHED PDF

## 1.0 **STATEMENT OF THE SERVICE**

- 1.1 The aim of the winter maintenance service is, as far as is reasonably possible, to allow the safe movement of traffic, pedestrians and cyclists, on York roads, footways and cycleways in times of adverse winter weather. It also seeks to keep delays and accidents to a minimum.
- 1.2 The service uses MeteoGroup for weather forecasting and Vaisala Ice Prediction Service. A Neighbourhood Services Duty Officer determines what precautionary action to take and when to deploy the operational resources for clearing of snow and ice.
- 1.3 The winter maintenance season for York is between 1st November and 31st March, however, monitoring of the weather will begin in October and extend through until April.
- 1.4 Precautionary treatment will be undertaken before ice forms or snow settles on the highway. The precautionary treatment will only be to footways and carriageways on the defined network, which excludes most footways, cycleways and all car parks. Snow clearance is based on a priority network for carriageways and footways. The treatment is co-ordinated with the NYCC, East Riding and the Highways Agency (A-one+) to ensure a reasonable continuity of treatment, this does not necessarily mean that similar treatments will apply.

If there is a formal diversion route in place for traffic management reasons this route will be treated for the duration of the diversion.

- 1.5 The treatments are:-

- precautionary treatment by lorry mounted spreaders of Safecote on the gritting routes;
- clearance of snow on carriageways by ploughing and when necessary, the application of Safecote and or grit sand;
- clearance of snow and ice on footways by powered footway snow ploughs and shovelling and where necessary, the application of salt and grit sand;
- clearance of snow and ice on footstreet carriageways by trailer gritter and snow ploughs;
- approximately 233 salt bins located throughout the area for resident use on footways.

- 1.6 In times of exceptional weather conditions, a Severe Weather Control Room will be opened by the Duty Officer to co-ordinate the winter maintenance service. Directorates of City of York Council will staff this control room. (See Annex 14)
- 1.7 The service will issue information to its customers to keep them advised of the action being taken and the level of service expected. This will be done as publicity through the media, displays and leaflets and Ward Committees.

## 2.0 **ROLES AND COMMUNICATION**

### **Roles**

- 2.1 Neighbourhood Services are responsible for the management operation and co-ordination of the winter maintenance service. They will monitor the weather and respond to changing conditions. A Duty Officer is responsible for decision making and issuing of instructions to the Operations Supervisor for treatments and deciding when to open the Severe Weather Control Room. Neighbourhood Services are also responsible for monitoring and reviewing the service to the benefit of the City Council customers and, as far as possible, provide an information service and advice about the service.

### **Communication**

- 2.2 Road conditions in winter can change very quickly. It is vital that effective liaison and communication exists between the Weather Centre, Duty Officer, Neighbourhood Services Operations Supervisor, Police, media, Emergency Services, public transport, NYCC, A-one+ and Council Members.
- 2.3 The Duty Officer and Operations Supervisor will communicate by email, fax and telephone, but particularly by telephone out of hours, Bank Holidays and weekends. See Annex 2 for rotas and telephone numbers. Duty Officers and Supervisors will keep mobile telephones operational at all times so that quick contact can be made when necessary.
- 2.4 The Duty Officer will issue an instruction using Form A (see Annex 3) every day (except Bank Holidays and weekends) to the Supervisor as soon as possible after the midday forecast is issued. Subsequent instructions may be issued by telephone and confirmed as soon as possible using Form A.
- 2.5 The midday instruction will be emailed or faxed to NYCC, East Riding and A-one+ Operational Units.
- 2.6 At the judgement of the Duty Officer, Press Releases will be issued for immediate release to Radio York and Minster FM when it is appropriate for the travelling public to be made aware of sudden changes in weather and the action being taken. This may be by telephone.
- 2.7 Any calls received by the Neighbourhood Services Organisation Night Watchman concerning winter maintenance should be referred to the Duty Officer.
- 2.8 In times of prolonged severe weather, regular updates on the service will be issued to the media.
- 2.9 The press and radio will be advised when the Severe Weather Control Room has been opened and regular updates are issued.
- 2.10 In October each year a leaflet, advising of the winter maintenance service is produced and is available throughout the winter season in all the Council's libraries and Departmental receptions.
- 2.11 The information contained within this leaflet is also placed on the council web site.

- 2.12 Customers are made aware of the existence of the leaflet and web site information in October via ward newsletters and posters on notice boards.
- 2.13 In times of severe weather, the Duty Officer will contact the public transport team to advise them of any problems and the actions being taken.

### 3.0 **OPERATIONAL PROCEDURE**

#### 3.1 **Pre Season Activities**

##### *Highway Maintenance Services*

- Order service from MeteoGroup.
- Order service from Vaisala.
- Review previous season.
- Review and amend routes for treatment and snow clearance.
- Review and amend Winter Maintenance Manual.
- Prepare Duty Officer rotas.
- Co-ordinate with adjacent Authorities/Agencies.
- Advise Police of arrangements.
- Inspection of vehicles and materials.
- Agree communications.
- Issue pre season Instructions to Operations.
- Establish communications with media.
- Publish information leaflet advising the public of the service.

#### 3.2 *Operations*

- Establish stockpiles of materials.
- Servicing of plant and equipment.
- Review and amend routes.
- Carry out driver training.
- Calibration of spreaders.
- Order new salt bins as instructed.
- Put out salt bins and fill.
- Prepare Supervisor/Driver rotas.
- Prepare Supervisor/Footway Operatives rotas (Dec to Feb only incl)
- Review Method Statement.

- Carry out trial runs on routes.

## **Winter Season Daily Activities**

### **3.3 Highway Maintenance Services**

- Check weather forecast
  - early morning
  - early afternoon
  - early evening
  - late evening
- Take advice from MeteoGroup.
- Make decision on proposed action.
- Issue Report/Instruction to:
  - Operations
  - NYCC/A-one+
- Open Severe Weather Control Room (when necessary).
- Carry out network inspections.
- Issue publicity releases (when necessary).
- Accept telephone reports/requests and issue instructions.
- Weekend arrangement - Duty Officer to advise Supervisor by telephone
- Co-ordinate winter maintenance activities.

### **3.4 Operations**

- Accept instructions from Duty Officer.
- Mobilise:
  - Drivers
  - Gritters
  - Loaders
  - Fitters
  - Labour
- Carry out treatment.
- Advise Duty Officer of problems.
- Advise Duty Officer when treatment complete.
- Complete treatment logs. (see Annex 6)
- Complete daily reports.

- Telephone reports/requests diverted to Duty Officer.
- Prepare equipment for next action.
- Carry out start and mid season calibration of spreaders.
- Attend Severe Weather Control Room.
- Refill salt bins as instructed by Duty Officer.

### 3.5 Post Season Activities

- Stand down Supervisor/Duty Officer.
- Carry out post season overhaul of equipment.
- Take in salt bins, clean and store.
- Carry out review of service.

### 3.6 Carriageways Treatment

- Treatment of route network as drawings in Annex 5.
- Priority snow clearing network as drawing in Annex 6.
- Routes as drawings 1 to 10 in Annex 7.
- Streets included in routes as Annex 8.
- Speed of spreading Optimum gritting at 30mph., where permitted and where applicable
- Precautionary treatment 10g/m<sup>2</sup>.
- Pre-snow treatment 15g/m<sup>2</sup> (x 2 dependant upon when salting last taken place).
- Post-snow salting 15g/m<sup>2</sup> to 30g/m<sup>2</sup>.
- Target times 1 hour mobilisation time.  
2 hours treatment time.
- Mobilisation time time taken from receipt of instruction to leaving depot.
- Treatment time time from leaving depot to completion of treatment.



### 3.7 Footways Treatment

- Treatment when the temperature is expected to remain below Zero up to 12 noon the following day.
- Treatment when there are prolonged temperatures of Zero or less and before and after heavy snow.
- Salt bins located through the area for self-help.
- Snow clearance by powered footway ploughs, shovelling as instructed by Duty Officer.
- Application of sand as instructed by Duty Officer.
- Application of Safecote to footways by manual salt spreaders.

#### *Priority*

|                                       | Drwg No      |          |
|---------------------------------------|--------------|----------|
| Footstreets                           | GRITCNT1.ECW | Annex 10 |
| Acomb                                 | GRITACO.ECW  | Annex 10 |
| Haxby                                 | GRITHAX.ECW  | Annex 10 |
| Old School Court                      | GRITJB1      | Annex 10 |
| William Plows Avenue                  | GRITJB2      | Annex 10 |
| Wentworth Road                        | GRITJB3      | Annex 10 |
| Scarcroft Hill                        | GRITJB3      | Annex 10 |
| Routes from Railway Station/Car Parks |              |          |
| St Helen's Road                       |              |          |

|                                |          |
|--------------------------------|----------|
| Schedule of Salt Bin Locations | Annex 11 |
|--------------------------------|----------|

### 3.8 Cycleways Treatment

- No precautionary treatment.
- Spreading of sand as instructed by Duty Officer.
- Schedule of Cycle paths/ways Annex 12

### 3.9 For standard conditions and actions and chart showing the decision making process See Annex 13.

#### 4.0 **EQUIPMENT**

Operational Vehicles - will be properly garaged and available for inspection and consist of:

- Lorry mounted salt spreaders - 10 no.  
2 no. standby.
- Loading Shovel 1 no.
- Towed Spreader 1 no. (and 1 standby/spare)
- Towed Sand Spreader 1 no.
- Footway / cycleway Spreader - 2 no.
- Spreader calibration manufacture setting undertaken pre- and mid season  
certification to Duty Officer  
mechanism checked and cleared regularly.
- Snowploughs checked for soundness pre- and mid season  
mechanism checked and cleaned regularly.
- Salt Bins 233 no. approximately
- Training of Operatives winter maintenance operators qualification  
awarded by the City and Guilds Institute.
- Reserve Vehicles in exceptional circumstances, seek  
assistance of local contractors.
- Manual Salt Spreaders 8 no.

## 5.0 MATERIALS

Safecote

The precoated salt to be used for winter maintenance operations is in accordance with BS3247 1991 and is a suitable grade so as to be fit for the purpose.

Stockpile

- 2500 tonnes - start of season.
- 1000 tonnes - minimum stockpile.
- 60 tonnes/operation.
- Storage at Hazel Court

Sand

The grit sand to be used for winter maintenance operations is a suitable grade so as to be fit for the purpose.

Stockpile

- 50 tonnes - start of season.
- 25 tonnes - minimum stockpile.
- Storage at Hazel Court

## 6.0 **WEATHER FORECASTING**

- 6.1 During the winter season the weather forecasting service will be provided by the MeteoGroup Roadcast or similar organisation.
- 6.2 Forecast Procedure  
Weather forecasts are web based and provided by MeteoGroup which operates on GMT throughout the year.
- 6.3 Mon - Fri Office Hours  
A 24 hour advanced forecast is available for the Duty Officer at around 1 pm and a decision can then be made by the Duty Officer whether or not to treat the network but this is dependant on the confidence level of MeteoGroup Roadcast forecast. If a decision is made to carry out treatment then the Duty Officer will make the necessary arrangements with the supervisor. However if the forecast is marginal, a further update is obtained at 1800 hours. Again depending on the confidence level of the MeteoGroup forecast a decision is taken at this time. If the forecast is still marginal the Duty Officer will monitor the weather using a home based laptop computer and action treatment if required.
- 6.4 Mon - Fri outside office hours, weekends and public holidays.  
The procedure is as outlined in 6.3 except that the Duty Officer uses the dedicated home based laptop computer. The Duty Officer will inform the operations supervisor by telephone as soon as the decision is made. The Duty Officer will also update Senior Officers and the Directorate elected member.
- 6.5 All forecasts and decisions are logged on a hard paper file for record purposes and to be used should a third party public liability claim subsequently arise as a result of winter weather.
- 6.6 A Consultancy Service is provided by the MeteoGroup Forecaster and the Duty Officer must make good use of this service especially when the need arises to discuss marginal forecasts, when we can expect significant levels of snowfall or anything whatsoever which will aid the Duty Officer in the decision making process.
- 6.7 Significant changes to the forecast.  
The MeteoGroup Roadcast office will notify the Duty Officer immediately if there is a significant change to any earlier forecast. This can be done at the 1800 hours electronic update or by telephone. If this change occurs out of office hours the forecaster will telephone the Duty Officer on their home and/or mobile telephone. A significant change is defined as a 2 degree difference in temperature or a change in temperature or an unforeseen precipitation forecast.

## 7.0 **SPECIFICATION**

### **Precautionary Salting**

- 7.1 Precautionary salting shall only be carried out on defined roads and footways, normally under the following circumstances:
- a) on wet roads where a weather forecast indicates that freezing conditions may occur.
  - b) on roads where a hoarfrost is predicted (this occurs when the road surface temperature is below zero and at or below dew point).
  - c) in the absence of forecast information when falling temperatures reach +1°C providing that account has been taken of the prevailing humidity, residual salinity and cloud cover - advice should be sought from the MeteoGroup Roadcast in the event of any doubt about these matters.
- 7.2 The decision making process is contained in Annex 13 of this manual.
- 7.3 Meteorological information will be obtained direct from the MeteoGroup Roadcast office and/or via Vaisala.
- 7.4 Precautionary treatment shall be carried out at a minimum rate of 10g/m<sup>2</sup>. When freezing conditions occur, or are expected to occur after rain, precautionary salting rates shall be increased to 15g/m<sup>2</sup> or 20g/m<sup>2</sup> in exceptional conditions. In these conditions treatment shall be delayed to reduce loss of salt by run off unless freezing conditions coincide with rainfall.
- 7.5 Where ice and/or snow has formed on the road surface, Safecote shall be spread at a rate of 2 x 15g/m<sup>2</sup>. In these conditions priority shall be given to high category roads (Annex 6).
- 7.6 In the event of sustained low temperatures account shall be taken of the need to increase the rate of spread of salt by approximately 1.0g/m<sup>2</sup> for every 1°C drop in temperature below -5°.
- Below -11°C the action of salt is ineffective.**
- 7.7 Water from thawing snow can spread across the carriageway and freeze. Additional treatment may be required to deal with this (based on Duty Officers instructions).

### **Black Ice**

- 7.8 Black Ice forms when roads and footways, which have not been treated, are covered with a film of water after rainfall or with melting snow and there is a sharp drop in temperature (a sudden loss of cloud cover) and a thin sheet of ice forms on the surface. Under these conditions the action of Safecote will be less effective and sand will need to be spread on the surface, this will be done at the Duty Officers instruction.

### **Snow Clearing**

- 7.9 Operational Stages

For the purposes of this plan, there are three operational stages in snow clearing:

- Stage 1        Light Falls of undisturbed accumulation of snow reaching a depth less than 35mm
- Stage 2        Moderate Falls of snow reaching a depth of from 35mm to 100mm, or light falls associated with drifting.
- Stage 3        Heavy Falls of over 100mm or moderate fall associated with drifting.

- 7.10 When continuous snow is forecast the precautionary spreading rate shall be increased to a continuous 15g/m<sup>2</sup> or 20g/m<sup>2</sup> depending on the anticipated severity of the snowfall. The presence of Safecote will melt the initial snowfall and provide a wet surface beneath subsequent snow, thus easing the work of ploughing. The Duty Officer will provide advice on the spread rate.
- 7.11 When a light snowfall occurs and precautionary treatment has not been carried out, dispersal may be effected by spreading Safecote at a rate of up to 2 x 15g/m<sup>2</sup>. Where a succession of treatment runs are undertaken prior to or during snowfall these are to be clockwise then anti-clockwise and repeating as required, directed by WMDO. The action of traffic will accelerate this process. It will not normally be necessary to plough except where local drifting has occurred.
- 7.12 Road ploughing shall be undertaken as soon as the depth of snow exceeds 35mm, with the use of side blades, supplemented by Safecote spread at the rate of 15g/m<sup>2</sup>. Only in exceptional circumstances should repeated applications of Safecote be used as an alternative to ploughing in rural areas. In urban areas where problems may be experienced in ploughing the carriageway due to a build up of snow in channels it may be necessary to make more than one salting run.
- 7.13 When heavy snowfalls occur it may be found useful to plough continuously, to prevent build up and compaction by traffic. Such ploughing can be combined with simultaneous treatment at 15g/m<sup>2</sup>. However once snow depths of 120mm have been reached, when tackling snowdrifts or on gradients, it may be necessary to continue ploughing without Safecote treatment. In these conditions the weight of a Safecote load will aid vehicle traction. In certain circumstances snow may be loaded into vehicles and removed from site to allow the carriageway to be cleared (based on Duty Officer's instructions). Any snow removed within the City Centre will be taken to the River Ouse for disposal.
- 7.14 In the event of such extreme conditions that road blockages due to snow are likely to occur throughout the City, resources shall be concentrated on the defined snow clearance routes (Annex 6).
- 7.15 The decision making process in the event of snow clearing operations is contained in Annex 13 of this manual.
- 7.16 Ploughing should be carried out to avoid the creation of irregular windows in the carriageway and the build up of snow across road junctions, against gates, bridge parapets, fences and walls. This applies particularly to level crossings where close co-operation with the railway service provider must be maintained.
- 7.17 If hard packed snow conditions should occur sharp sand or small aggregate can be spread through tailboard or by towed gritters. Reversion to Safecote should be made as soon as possible since abrasives contribute little to the removal of snow and ice and may block drains and gullies.

- 7.18 Every effort should be made to remove slush from carriageways by the use of side blades particularly when the current weather forecast indicates that freezing conditions are expected.
- 7.19 With regards to snow clearance at railway level crossings, from bridges over railway and rail systems and from roads in the vicinity of railways the Council does comply with the guidance given in the Department of Transport Circular Roads No. 18/77. A copy of this is attached in Annex 3.

### **Treatment of Footways**

- 7.20 Precautionary treatment of some strategic footways will be carried out when the footways are expected to remain below Zero up to 12noon the following day and or where there is a prolonged period of Sub-Zero temperatures, or when snow is forecast to fall and give accumulations. (See Annex 10 for details).
- 7.21 In central urban areas and at other approved locations shown in Annex 10 the treatment of snow or heavy frost may be carried out by the application of Safecote or a grit/Safecote mixture as and when directed by the Duty Officer. Snow exceeding 25mm in depth should be removed prior to this treatment. Only in prolonged adverse weather conditions should treatment be extended to other footways.
- 7.22 If Black Ice forms at locations around the City Centre the Duty Officers will make an early decision whether to apply grit sand to the affected areas.
- 7.23 Highway Maintenance Services have established a priority listing of footways to be treated in accordance with item 3.7 and shown in Annex 10.
- 7.24 Neighbourhood Services (NS) will have men on standby for footway treatment between the period December to February (inclusive). The remainder of time will be similar subject to WMDO's discretion or if occasional treatment needed manned by volunteers of NS.

### **Safecote**

- 7.25 Rock salt pre-coated with Safecote complying with British Standard BS3247.1991 shall be used for the winter maintenance of the defined roads. BS3247.1991 specifies the essential properties of the salt and includes details of test procedures for determining these properties.
- 7.26 Reserves of Safecote will be held within the general stockpiles contained in Neighbourhood Services, Hazel Court depot.
- 7.27 Safecote will be made available from 1 October each year by Neighbourhood Services Operations for use until the conclusion of the winter maintenance period (generally 30 April the following year) or as directed by the Winter Maintenance Duty Officer.

- 7.28 During this period it will be Neighbourhood Services Operations responsibility to ensure that the Safecote is maintained in a suitable condition to ensure its correct application by Neighbourhood Services Operations winter maintenance vehicles to the road surface.
- 7.29 The Safecote moisture content will vary dependent on the method of storage used and Neighbourhood Services Operations shall take action as necessary to maintain the Safecote to the requirements of BS3247.1991, during the period of responsibility.
- 7.30 Safecote, when evenly distributed across the carriageway surface, will offer protection against the formation of ice generally in accordance with the details given below:

| Rate of Application    | Minimum Temperature |
|------------------------|---------------------|
| 10/15 g/m <sup>2</sup> | -3/-4°C             |
| 15/20 g/m <sup>2</sup> | -4/-6°C             |
| 25/30 g/m <sup>2</sup> | -10/-12°C           |

- 7.31 In exceptional circumstances Neighbourhood Services Operations will be required to apply an abrasive aggregate either separately or in addition to rock salt as directed by the Duty Officer.



8.0 **SEVERE WEATHER CONTROL ROOM**

- 8.1 During prolonged severe weather conditions the winter maintenance Duty Officer has discretion to open the Control Room. More information on this and the procedures for opening it can be found in Annex 14.

NOTE: ANNEX 14 IS A RESTRICTED CIRCULATION DOCUMENT

## 9.0 **CROSS BOUNDARY ARRANGEMENTS**

- 9.1 A-one+ - No arrangements with A-one+, all routes curtailed on the boundary.
- 9.2 East Riding of Yorkshire Council - No arrangements with East Riding of Yorkshire Council, all routes curtailed on the boundary.
- 9.3 North Yorkshire County Council - The City of York Council will treat the A166 from its boundary to the Buttercrambe junction. In return Division 4 (Kirbymoorside) will treat the C92 Corban Lane Wigginton from the City Boundary to the B1363 Wigginton Road and will treat the B1363 Wigginton Road from the City Boundary to the Reliance garage.  
Division 2 (Thirsk) will treat the A19 from Skelton boundary to the junction with the road to Overton, just south of Shipton by Beningbrough.

# SEVERE WINTER WEATHER CONTROL ROOM CALL LOG

Call taken by  Date  /  /  Time  :

## CUSTOMER MAKING REPORT:

Name  Tel No.

Address

Village/Town

Detail of problem/request/report etc.

|  |
|--|
|  |
|  |
|  |
|  |
|  |
|  |

Initial action taken or reply made

|  |
|--|
|  |
|  |
|  |
|  |
|  |
|  |

Initial action taken/reply made by:

|  |
|--|
|  |
|--|

Further action to be taken

|  |
|--|
|  |
|  |
|  |
|  |
|  |
|  |

Further action to be taken by:

|  |
|--|
|  |
|--|

Information passed to above by: Verbal/ Fax / Other:

|  |
|--|
|  |
|--|

Confirmation of Information Received / Further Action carried out

|  |
|--|
|  |
|  |

Other comments

|  |
|--|
|  |
|  |
|  |

Other comments made by:

|  |
|--|
|  |
|--|

## POST OFFICE LOCATIONS

Acomb PO  
65 Front Street, Acomb  
Tel: 798301

Foss Mount PO  
191-193 Huntington Road  
Tel: 624619

Beckfield Lane PO  
147 Beckfield Lane  
Tel: 785910

Heslington PO  
13 Main Street, Heslington  
Tel: 412171

Bishopthorpe PO  
25-27 Main Street, Bishopthorpe  
Tel: 706186

Heworth PO  
73 East Parade  
Tel: 424641

Broadway PO  
44 Broadway  
York  
Tel: 627290

Hopgrove PO  
Orchard Nurseries  
48 Hopgrove Lane South  
Tel: 421153

Brockfield PO  
60 Brockfield Park Drive  
Tel: 624768

Huntington PO  
43 North Moor Road, Huntington  
Tel: 769180

Copmanthorpe PO  
9 The Shopping Centre, Copmanthorpe  
Tel: 706287

Lendal PO  
22 Lendal  
Tel: 0845 7223344

Crichton Avenue PO  
1 Intake Avenue  
Tel: 622804

Market Place PO  
4 Colliergate  
Tel: 651398

Dringhouses PO  
14 Tadcaster Road  
Tel : 706438

Melrosegate PO  
204 Melrosegate  
Tel: 411964

Dunnington PO  
29 York Street, Dunnington  
Tel: 481320

Micklegate PO  
95 Micklegate  
Tel: 622059

Eastholme Drive PO  
Costcutter Store  
20 Eastholme Drive  
Tel: 628391

Naburn PO  
The Reading Rooms  
Front Street, Naburn  
Tel: 644100

## **POST OFFICE LOCATIONS**

New Earswick PO  
20 Hawthorn Terrace, New Earswick  
Tel: 768105

Skelton PO  
52 Fairfields Drive, Skelton  
Tel: 470837

Stockton on the Forest PO  
52 The Village, Stockton on the Forest  
Tel: 400906

Strensall PO  
53-55 The Village, Strensall  
Tel: 490301

Tang Hall Lane PO  
192-194 Tang Hall Lane  
Tel: 412959

Upper Poppleton PO  
Station Road, Upper Poppleton  
Tel: 794365

Walmgate Bar PO  
101 Walmgate  
Tel: 623956

Wheldrake PO  
58 Main Street, Wheldrake  
Tel: 449382

Woodthorpe PO  
61 Moorcroft Road  
Tel: 707329

## **SCHOOL LOCATIONS**

### **Special Schools**

Applefield School  
Bad Bargain Lane  
Tel: 415924

### **Nursery School**

Elvington Under Fives  
The Green Unit, Dauby Lane  
Tel: 607515

Happy Jays Nursery  
Audax Close  
Tel: 479261

Kaleidoscope/Acorn  
Queen Annes Road  
Tel: 642547

Ladybirds Kinder Class  
St. Andrews Church, Huntington Road  
Tel: 750363

Rainbow Playgroup  
Carr Jnr School, Ostman Road  
Tel: 798996 + 07821351869

St Aelreds R C Primary School  
216 Fifth Avenue  
Tel: 422800

St Paul's Nursery School  
12 St Paul's Square, Holgate Road  
Tel: 622291

Straylands Private Day Nursery  
Fairfield, Malton Road  
Tel: 416306

### **Primary Schools**

Acomb Primary  
West Bank, Acomb  
Tel: 798453

Archbishop of York's CE Junior  
Bishopthorpe  
Tel: 706272

Badger Hill Primary  
Crossways, Hull Road  
Tel: 410213

Bishopthorpe Infant  
Sim Balk Lane, Bishopthorpe  
Tel: 707506

Burton Green Primary (N)  
Burton Green, Clifton  
Tel: 655028

Carr Infant  
Ostman Road, Acomb  
Tel: 798266

Carr Junior  
Ostman Road, Acomb  
Tel: 798996

Clifton Green Primary  
Kingsway North, Clifton  
Tel : 627270

Clifton Without Junior  
Rawcliffe Lane, Clifton Without  
Tel: 624568

Copmanthorpe Primary  
Low Green, Copmanthorpe  
Tel: 705400

## SCHOOL LOCATIONS

### Primary Schools (cont...)

Derwent Infant (N)  
Osbalwick Lane, Osbalwick  
Tel: 410009

Derwent Junior  
Osbalwick Lane, Osbalwick  
Tel: 413231

Dringhouses Primary  
St Helen's Road, Dringhouses  
Tel: 706493

Dunnington CE Primary (VC)  
Pear Tree Lane, Dunnington  
Tel: 489615

Elvington CE Primary (VC)  
Dauby Lane, Elvington  
Tel: 608393

English Martyrs RC Primary (VA)  
Hamilton Drive, Acomb  
Tel: 791370

Fishergate Primary (N)  
Fishergate, York  
Tel: 623511

Haxby Road Primary (N)  
154 Haxby Road, York  
Tel: 653218

Headlands Primary  
Oak Tree Lane, Haxby  
Tel: 762356

Hempland Primary  
Whitby Avenue, Stockton Lane  
Tel: 421065

Heworth CE Primary  
53 Heworth Road, Heworth  
Tel: 424742

Hob Moor Primary  
Green Lane, Acomb  
Tel: 791140

Huntington Primary  
North Moor Road, Huntington  
Tel: 768636

Knavesmire Primary (N)  
Campleshon Road, York  
Tel: 653279

Lakeside Primary  
Oakdale Road, Clifton Without  
Tel: 691473

Lord Deramore's Primary (VC)  
School Lane, Heslington  
Tel: 410457

Naburn CE Primary (VC)  
Naburn  
Tel: 633287

New Earswick Primary (VA)  
Hawthorn Terrace, New Earswick  
Tel: 768228

Osbalwick Primary  
The Leyes, Osbalwick  
Tel: 411036

Our Lady's RC Primary (N) (VA)  
Windsor Garth, Acomb  
Tel: 791646

## SCHOOL LOCATIONS

### Primary Schools (cont...)

Park Grove Primary  
Park Grove, York  
Tel: 659727

St Barnabas' CE Primary (VC)  
Jubilee Terrace, Leeman Road  
Tel: 653323

Poppleton Ousebank Primary  
Main Street, Upper Poppleton  
Tel : 794649

St George's RC Primary (N) (VA)  
1 Winterscale Street, York  
Tel: 636427

Poppleton Road Primary  
Poppleton Road, York  
Tel: 798789

St Lawrence's CE Primary (VA)  
Heslington Road, York  
Tel: 625131

Ralph Butterfield Primary  
Station Road, Haxby  
Tel: 768325

St Mary's CE Primary (VC)  
School Lane, Askham Richard  
Tel: 707125

Rawcliffe Infant (N)  
Eastholme Drive, Clifton  
Tel: 624772

St Oswald's CE Primary  
Heslington Lane, Fulford  
Tel: 633341

Robert Wilkinson Primary (VC)  
West End, Strensall  
Tel: 490306

St Paul's CE Primary (VC)  
St Paul's Terrace, Holgate Road  
Tel: 625240

Rufforth Primary  
Wetherby Road, Rufforth  
Tel: 738347

St Wilfred's RC Primary (VA)  
Monkgate, York  
Tel: 659726

Scarcroft Primary  
Moss Street, York  
Tel: 653569

Stockton-on-the-Forest Primary  
The Village, Stockton-on-the-Forest  
Tel: 400366

Skelton Primary  
Brecksfield, Skelton  
Tel: 470344

Tang Hall Primary (N)  
Sixth Avenue, Heworth  
Tel: 424765

St Aelred's RC Primary (N) (VA)  
Fifth Avenue, Tang Hall  
Tel: 422800

Westfield Junior  
Askham Lane, Acomb  
Tel: 798451



## **SCHOOL LOCATIONS**

### **Primary Schools (cont...)**

Wheldrake CE Primary (VA)  
North Lane, Wheldrake  
Tel: 448564

Wigginton Primary  
Westfield Lane, Wigginton  
Tel: 761647

Woodthorpe Primary  
Summerfield Road, Woodthorpe  
Tel: 705462

Yearsley Grove Primary  
Yearsley Grove, Huntington  
Tel: 656681

### **Secondary Schools**

All Saints' RC (VA)  
Nunnery Lane, York  
Tel: 647877

Archbishop Holgate's CE School (VC)  
Hull Road, York  
Tel: 411341

Burnholme Community College  
Bad Bargain Lane, York  
Tel: 415906

Canon Lee School  
Rawcliffe Drive, York  
Tel: 560000

Fulford School  
Fulfordgate, Fulford  
Tel: 633300

Huntington School  
Huntington Road, York  
Tel: 752100

Joseph Rowntree School  
Haxby Road, New Earswick  
Tel: 768107

York High School  
Cornlands Road, Acomb  
Tel: 791674

Manor CE School (VA)  
Millfield Lane, York  
Tel: 782902

Millthorpe School  
Nunthorpe Avenue, York  
Tel: 686400

## SHELTERED HOUSING LOCATIONS

### City of York Council

Marjorie Waite Court  
Evelyn Crescent, Clifton  
Tel: 612595/551870

Honeysuckle House  
Herdsman Road, Dringhouses  
Tel: 552624

Lovell House  
Wains Road, Dringhouses  
Tel: 552626

The Glebe  
The Manor Beeches, Dunnington  
Tel: 552617

Delwood  
Main Street, Fulford  
Tel: 552620

Glen Lodge  
2 Sixth Avenue, Heworth  
Tel: 422837

Gale Farm Court  
Front Street, Acomb  
Tel: 552294

Alex Lyon House  
St Aelred's Close, Fifth Avenue  
Tel: 552618

Barstow House  
St. Benedicts Road  
Tel: 654246

City Mills  
Skeldergate  
Tel: 552619

Helmsley House  
The Groves,  
March Street, York  
Tel: 552623

Moatside Court  
Lord Mayor's Walk  
Tel: 552628

Lincoln Court  
Ascot Way, Windsor Garth  
Tel: 552622

Esplanade Court  
Marygate  
Tel: 552628

Dale Street & Swann Street  
Nunnery Lane  
Tel: 636929

Bootham Square  
Bootham Square, York  
Tel: Warden Lorna 07767318131

### Joseph Rowntree Housing Trust

Sandacre Court  
Beckfield  
Tel: 781544

Dower Court  
William Plows Avenue  
Tel: 416650

Red Lodge  
New Earswick  
Tel: 762111

Old School Court  
Upper Poppleton  
Tel: 750700

## **SHELTERED HOUSING LOCATIONS**

### **York Housing Association**

Margaret Philipson Court  
The Groves  
Tel: 632075

Bretgate  
Navigation Road  
Tel: 658171

Lichfield Court  
Albemarle Road  
Tel: 656044

### **Anchor Trust**

Saddlebrook Court  
Herman Walk, Foxwood  
Tel: 790696

Elm Tree Gardens  
Oak Rise, Acomb  
Tel: 789433

Guardian Court  
Water Lane, Clifton  
Tel: 652494

Barleyfields  
Shipton Road, Clifton  
Tel: 629879

## CARE HOME LOCATIONS

### Older People: Local Authority Homes

Fordlands Road  
1 Fordlands Road, Fulford  
Tel: 630048

Grove House  
40-48 Penley's Grove Street  
Tel: 628250

Haxby Hall  
York Road, Haxby  
Tel: 768944

Morrell House  
388 Burton Stone Lane  
Tel: 658998

Oakhaven  
144 Acomb Road  
Tel: 791599

Oliver House  
20 Bishophill Junior  
Tel: 653301

Willow House  
Long Close Lane  
Tel: 630437

Windsor House  
22 Ascot Way  
Tel: 798004

Woolnough House  
52 Woolnough Avenue, Tang Hall  
Tel: 413656

### Adults: Local Authority Homes

77 Flaxman Avenue  
Tang Hall  
Tel: 426428

### Older People: Private & Voluntary Homes

Broadway Lodge  
151 Fulford Road  
Tel: 621884

Connaught Court  
The Royal Masonic Benevolent Institution  
St Oswald's Road, Fulford  
Tel: 626238

Galtres Care Home LLP  
Ox Carr Lane, Strensall  
Tel: 491300

Grimston Court Residential Home  
Hull Road  
Tel: 489343

Ivy Lodge Retirement Home  
Briergate, Haxby  
Tel: 760629

Lamel Beeches  
JRHT. 105 Heslington Road  
Tel: 416904

Lime Tree House  
Chantry Green, Main Street, Upper  
Poppleton  
Tel: 795280

## CARE HOME LOCATIONS

### Old People: Private & Voluntary Homes (cont)

The Lodge  
Main Street, Heslington  
Tel: 430781

The Oaks  
JRHT. Hartrigg Oaks, Haxby Road, New  
Earswick  
Tel: 750700

Parkside  
98-100 Bishopthorpe Road  
Tel:

Red Lodge  
JRHT. Hawthorne Terrace, New Earswick  
Tel: 762111

Rosevale Residential Home  
33 The Village, Wigginton  
Tel: 764242

Somerset Nursing Home  
1 Church Lane, Wheldrake  
Tel: 448313

York Rise Nursing & Residential Home  
Heslington Road  
Tel: 612670

### Adults: Private & Voluntary Homes

Alder House  
JRHT. Alder Way, New Earswick  
Tel: 750453

1 Arbor Close  
**mencap**, Huntington  
Tel: 750313

2 Arbor Close  
**mencap**, Huntington  
Tel: 750390

3 Arbor Close  
**mencap**, Huntington  
Tel: 750499

Charles Court  
JRHT, Northfields, Strensall  
Tel: 491589

Christmas Lodge  
196 Mount Vale  
Tel: 647442

The Lifestyles  
55-59 Wentworth Road, Scarcroft Hill  
Tel: 645650

14 Derwent Road  
United Response, **Fulford**  
Tel: 640551

The Dexters  
21 Penley's Grove Street  
Tel: 644675

Dormary Court  
JRHT. Huntington Road  
Tel: 764901

The Graver's Care Home  
17 Wigginton Road  
Tel: 645510

Haisthorpe House  
139 Holgate Road  
Tel: 654638

## CARE HOME LOCATIONS

### **Adults: Private & Voluntary Homes (cont...)**

34 Maple Avenue  
**mencap**, Bishopthorpe  
Tel: 708870

35 Staindale Close  
**United Response**, Rawcliffe  
Tel: 672372

8 The Village  
**United Response**, Haxby  
Tel: 750308

22 Witham Drive  
**mencap**, Huntington  
Tel: 750307

Woodlands Respite Care Centre  
Thief Lane, Hull Road  
Tel: 430600

65 York Road  
**Milbury Care Services**, Haxby  
Tel: 761846

### **Other (Small) Private & Voluntary Homes**

85 Moorgate  
Acomb  
Tel: 339185

Red Oaks  
27 Hawthorne Terrace, New Earswick  
Tel: 768126

Wishing Well  
37 Leven Road, Dringhouses  
Tel: 337566

Yearsley Villa Residential Home  
177 Huntington Road  
Tel: 634759

5 Navigation Road  
**MENCAP**  
Tel: 655530

1 Greenfields  
**MENCAP**  
Tel: 632881

## **NURSING HOME LOCATIONS**

Birchlands Nursing Home  
Moor Lane, Haxby  
Tel: 760100

The Retreat  
107 Heslington Road  
Tel: 412551

Blair Atholl Hospital  
122 York Road, Haxby  
Tel: 768738

Somerset Nursing Home  
1 Church Lane, Wheldrake  
Tel: 448313

Connaught Court  
St Oswalds Road, Fulford  
Tel: 626238

South Park Care House  
Gale Lane, Acomb  
Tel: 784198

Dunnington Lodge Nursing Home  
34 Church Street  
Tel: 488676

Stockton Hall  
Main Building, The Village, Stockton-on-Forest  
Tel: 400500

Fulford Nursing Home  
43 Heslington Lane  
Tel: 654269

St Leonard's Hospice  
185 Tadcaster Road  
Tel: 708553

Lamel Beeches Nursing Home  
105 Heslington Road  
Tel: 416904

The Meadowbeck Care Home  
1 Meadowbeck Close  
Osbalwick Lane  
Tel: 424244

Moorlands Care Home  
10 Moor Lane, Strensall  
Tel: 491694

Woodlands Respite Care  
120 Thief Lane, Hull Road  
Tel: 430600

The Mount Nursing Home  
188 The Mount Vale  
Tel: 647442

York House Ventures Ltd  
The Retreat, 107 Heslington Road  
Tel: 412666

Mulberry Court Care Home  
Clifton Park, Shipton Road  
Tel: 671122

York Rise Nursing & Residential Home  
Heslington Road  
Tel: 612670

The Oaks  
Hartrigg Oaks, Haxby Road, New  
Earswick  
Tel: 768266 / 750700

Nuffield Hospital  
Haxby Road  
Tel: 715000

## WINTER GRITTING      2009-2010      DUTY ROTA

| TEAM | DATE   |  | SUPERVISOR | WMDO    |
|------|--------|--|------------|---------|
| B    | 02 NOV |  | Bill       | John    |
| A    | 09 NOV |  | Sean       | Dave    |
| B    | 16 NOV |  | Nick       | Michael |
| A    | 23 NOV |  | Bill       | John    |
| B    | 01 DEC |  | Sean       | Dave    |
| A    | 07 DEC |  | Nick       | Michael |
| B    | 14 DEC |  | Bill       | John    |
| A    | 21 DEC |  | Sean       | Dave    |
| B    | 28 DEC |  | Nick       | Michael |
| A    | 04 JAN |  | Bill       | John    |
| B    | 11 JAN |  | Sean       | Dave    |
| A    | 18 JAN |  | Nick       | Michael |
| B    | 25 JAN |  | Bill       | John    |
| A    | 01 FEB |  | Sean       | Dave    |
| B    | 08 FEB |  | Nick       | Michael |
| A    | 15 FEB |  | Bill       | John    |
| B    | 22 FEB |  | Sean       | Dave    |
| A    | 01 MAR |  | Nick       | Michael |
| B    | 08 MAR |  | Bill       | John    |
| A    | 15 MAR |  | Sean       | Dave    |
| B    | 22 MAR |  | Nick       | Michael |
| A    | 29 MAR |  | Bill       | John    |



## FORM A

**WINTER MAINTENANCE 2009/2010  
CITY OF YORK COUNCIL**

**DAILY WINTER MAINTENANCE OPERATIONS INSTRUCTION**

DATE OF FORECAST

FORECAST INFORMATION

|  |
|--|
|  |
|  |
|  |
|  |
|  |

R.S.Temp:

Road State:

Hazards (Confidence); RST(     ), Ice (     ), Frost (     ), Snow (     )

ACTION REQUIRED

OPERATIONS INSTRUCTIONS

|  |
|--|
|  |
|  |
|  |
|  |

**PRECAUTIONARY OPERATIONS DEFINED HIGHWAY NETWORK**

|              |                |
|--------------|----------------|
| EVENING GRIT | TO COMMENCE AT |
|              | SPREAD RATE    |
| MORNING GRIT | TO COMMENCE AT |
|              | SPREAD RATE    |

**OTHER OPERATIONS**

|                       |    |
|-----------------------|----|
| CARRIAGEWAY PLOUGHING |    |
| FOOTWAYS              | P1 |
|                       | P2 |
| CYCLWAYS              |    |

**COMMENTS**

|  |
|--|
|  |
|  |
|  |

**INSTRUCTION ISSUED BY:**

ENGINEER

DATE / TIME

|  |  |
|--|--|
|  |  |
|--|--|

CIRCULAR ROADS NO 18/77

MRH/K

**Department of Transport**  
2 Marsham Street London SW1P 3EB

Direct line 01-212  
Switchboard 01-212 3434

---

|  |                |
|--|----------------|
| The Town Clerk                           | Your reference |
| The Chief Executive Officer              |                |
| The Greater London Council               | Our reference  |
| County Councils                          | HM1/922/1      |
| District Councils                        | Date           |
| London Borough Councils                  | 28 June 1977   |
| The Common Council of the City of London |                |

---

Dear Sir

**WINTER MAINTENANCE –  
SNOW CLEARING AT RAILWAY LEVEL CROSSINGS, FROM ROAD BRIDGES OVER  
RAILWAY AND ROAD SYSTEMS AND FROM ROADS IN THE VICINITY OF RAILWAYS.**

1. Circular ROADS No. 15/74, prepared in consultation with British Rail, gave guidance in its appendix on the execution of snow ploughing operations at railway crossings, and emphasised the need for local liaison between railway and highway authorities.
2. Experience during the recent winter has pointed the need to extend advice on winter maintenance activities on over-rail bridges and on over-road bridges and on roads in the vicinity of railways. Paragraphs 9 and 10 of the attached appendix contains that advice after appropriate consultation with British Rail and the opportunity has also been taken to make an increase in emphasis throughout the appendix. Circular Road No. 15/74 is accordingly superseded and copies of it should be destroyed.
3. Reference should also be made to Circular Roads 37/75 concerning safety to automatic half barrier level crossings and to current Traffic Sign Regulations.

Yours faithfully

J L HAMMOND

Note: Any correspondence concerning this Circular should be addressed to the Department of Transport, Highways Management 1 Division, 2 Marsham Street, London SW1P 3EB. Telephone enquiries should be made to 01-212-7110 or 7111. (Distribution enquiries 01-212-4944).

## SNOW CLEARING AT LEVEL CROSSINGS; FROM ROAD BRIDGES OVER RAILWAY SYSTEMS AND FROM ROADS PROXIMATE TO RAILWAYS.

### 1. CLEARANCE TO BE EFFECTED BY HIGHWAY AUTHORITY

British Rail rarely need to use snow ploughs, and even when they do so the result may be unsatisfactory for highway purposes. It has, therefore, been agreed that the appropriate highway authority should continue its ploughing operation over crossings situated on roads which are being cleared. There must, however, be proper liaison between the highway and rail authorities and care must be taken that snow does not build up across the tracks or against gates and barriers.

### 2. GUIDANCE ON THE USE OF VARIOUS VEHICLE TYPES – MECHANICAL SAFETY

#### 2.1 Snow-Ploughs, Snow Blowers and Snow Cutters of the Rotary Type.

Rotary equipment should NEVER be used to clear snow from any type of level crossing since there is a danger of the lower blade and support shoes fouling the rails.

#### 2.2 Department of Transport/Ploughing/Salt Vehicles.

These may be used for snow clearance at level crossings subject to observance of paragraphs 3 and 6 below.

#### 2.3 Local Authority Vehicles

Winter maintenance equipment, owned or operated by local authorities, varies considerably. Close cooperation is therefore essential between an authority and British Rail about the machinery available and how it can be used with safety and to the fullest advantage for clearing snow from, and spreading salt on, level crossings.

### 3. GUIDANCE RELATED TO VARIOUS TYPES OF LEVEL CROSSING

#### 3.1 Unmanned Crossings with Automatic Half Barriers

These are connected by telephone to the signal box controlling that particular section of line. The driver of a snow-plough must always obtain permission by telephoning the controlling signalman for safety clearance before proceeding on the crossing.

It is essential that snow be cleared from both lanes of a carriageway at half barrier crossings for a distance of at least 45 metres on either side of the crossing. If one lane is cleared and the other left covered with snow, even for a short time, road users may be tempted to weave around one of the half barriers in order to get on to the clear lane. With the opposite half barrier closed vehicles could be trapped or staff on the crossing with a train approaching. After the snow has been cleared the driver must park his plough at a safe distance from the railway track and return on foot to report to the signal man as quickly as possible that he is now clear of the crossing. In so doing he must confirm to the signalman that snow has not been built up across the track in such quantity as to impede trains.

#### 3.2 Unmanned Crossings Controlled by Miniature Red/Green Lights

These too are connected by telephone to the appropriate signal box. Again the driver of the snow plough must always obtain permission by telephoning the controlling signalman for safety clearance before proceeding on to the crossing and subsequently report that he is clear in the same way as for crossings with automatic half barriers.

3.3 Closed Circuit Television and Remotely Controlled Crossings Operated by a Signalman located some way from the Crossing.

These are also connected by telephone to the appropriate signal box and here again the driver of the snow-plough must always obtain permission by telephoning the controlling signalman before proceeding on to the crossing and subsequently report that he is clear.

3.4 Manually Controlled Crossings Operated by either a Crossing Keeper or a Signalman Located Adjacent to the Crossing

Snow-plough drivers must at all times obtain clearance from the signal-man or crossing keeper before driving on the level crossing.

3.5 Unmanned Uncontrolled Crossings, Usually Having Farm Type Gates or, Occasionally without Gates.

These are generally on minor roads; ploughing of unmanned uncontrolled crossings must only be carried out in accordance with prior arrangement made with British Rail.

**4. EFFECTS OF PLOUGHING OPERATIONS**

4.1 Snow-plough drivers must ensure, so far as it is possible, that accumulated snow is not deposited on railway tracks. Passing trains and rail snow-ploughs tend to leave windows of snow across the path of the carriageway. It is therefore suggested that highway authorities and British Rail co-ordinate plans which can be put into effect if and when this occurs.

4.2 After the crossing has been cleared the snow-plough driver must park his vehicle at a safe distance from the crossing, then return on foot to ensure that no solid objects have been deposited by the blade on or near the rails.

**5. CROSSINGS UNSUITTABLE FOR PLOUGHING**

There are some crossings which are dangerous or impossible to plough; for instance where the road descends steeply on both sides of the crossing, or where the rail protrudes to such an extent that plough blades might be fouled. For such crossings the local highway authority should consult the appropriate Divisional Civil Engineer of British Rail about the methods best employed to clear the snow.

**6. PRIVATELY OWNED CROSSINGS**

Where a level crossing is privately owned, agreement should be obtained from the owner by the local authority so that the authority can take the same action as they would in the case of a public crossing. Ploughing of unmanned uncontrolled crossings should only be carried out in accordance with prior arrangements made with British Rail – see paragraph 3.5 above.

**7. VEHICLES TRAVERSING LEVEL CROSSING FITTED WITH SNOW PLOUGHS IN THE TRAVELLING POSITION (ie NOT IN USE)**

When Department-owned vehicles are driven over level crossings, otherwise than for snow-clearing, the plough should always be locked in the raised position. Rotary ploughs should follow the requirements of the signs at level crossings concerning slow vehicles as set out in Diagram 649 of Traffic Signs (Amendment) and (Disqualification for offences) Regulations 1969.

## **8. GENERAL STANDARD OF CARE**

Apart from the operational requirements detailed above, highway authorities must take special care to ensure that the strictest safety precautions are taken when winter maintenance vehicles are negotiating level crossings. All snow-plough drivers must be conversant with provisions of the Highway Code and in particular those parts about the use of level crossings.

## **9. SNOW CLEARING FROM ROADS OVER OR NEAR RAILWAY LINES**

9.1 Snow ploughs of all types can throw snow and slush distances of 10 to 15 metres (the rotary type even more) when driven at speed. Drivers of snow plough vehicles must, therefore, be made aware of road bridges over railways and stretches of road near to railways, where they should operate at an appropriate speed in order to prevent thrown snow building up on railway lines or becoming a hazard to passing trains.

9.2 Particular care must be taken where there is a danger of thrown snow damaging or creating an electrical path from overhead railway electric power lines.

9.3 Care must be taken to avoid packing snow against bridge parapets, fences or walls such that, for instance, children could climb nearer to and so tamper with overhead electric power lines.

## **10. SNOW CLEARING FROM ROADS OVER OTHER ROADS AND ON DUAL CARRIAGEWAYS**

10.1 The opportunity is taken to draw attention to similar problems in relation to road-over-road bridges where drivers of ploughs should be aware of the dangers of throwing snow on to the lower road which would become a hazard to traffic and pedestrians.

10.2 Excessive speed when ploughing snow on to the central reserves of dual carriageway roads can result in danger to oncoming traffic in the opposite carriageway. Drivers should adjust their speed to prevent this happening.

JMC/K

Room S6/18  
**Department of the Environment**  
2 Marsham Street London SW1P 3EB

Direct line 01-212 8338  
Switchboard 01-212 3434

---

|  |                |
|--|----------------|
| The Town Clerk                           | Your reference |
| The Chief Executive Officer              |                |
| The Greater London Council               | Our reference  |
| County Councils                          | HM1/922/1      |
| District Councils                        | Date           |
| London Borough Councils                  | 11 August 1977 |
| The Common Council of the City of London |                |

---

Dear Sir

**WINTER MAINTENANCE –  
SNOW CLEARING AT RAILWAY LEVEL CROSSINGS, FROM ROAD BRIDGES  
OVER RAILWAY AND ROAD SYSTEMS AND FROM ROADS IN THE VICINITY OF RAILWAYS**

1. The following amendment should be made to Circular Roads 18/77 dated 28 June 1977. In paragraph 7 of the Appendix the second sentence should now read – “Rotary ploughs should follow the requirements of the signs at level crossings concerning slow vehicles as set out in diagram 649 of The Traffic Signs Regulations and General Directions 1975.”

Yours faithfully

J L HAMMOND

**WINTER MAINTENANCE 2009/10  
CITY OF YORK COUNCIL**

**DAILY WINTER MAINTENANCE OPERATIONS REPORT**

|                                 |   |                      |            |   |  |
|---------------------------------|---|----------------------|------------|---|--|
| DATE                            | <input type="text"/>  |                      | SUPERVISOR | <input type="text"/>                                  |  |
| WEATHER                         | <input type="text" value="DRY / FOG / RAIN / SLEET / SNOW - state depth"/>                |                      |            |   |  |
| OPERATION                       | <input type="text" value="PRE SALTING AND GRITTING / PLOUGHING / SALTING AND PLOUGHING"/> |                      |            |   |  |
| <b>ROUTE 1</b>                  | TIME OUT  | <input type="text"/> | TIME IN    | <input type="text"/>                                  |  |
| NAME OF DRIVER                  | <input type="text"/>  |                      | ROAD STATE | <input type="text" value="DRY / WET / SLUSH / SNOW"/> |  |
| DRIVER COMMENTS AFTER OPERATION | <input type="text"/>  |                      |            |   |  |
| <b>ROUTE 2</b>                  | TIME OUT  | <input type="text"/> | TIME IN    | <input type="text"/>                                  |  |
| NAME OF DRIVER                  | <input type="text"/>  |                      | ROAD STATE | <input type="text" value="DRY / WET / SLUSH / SNOW"/> |  |
| DRIVER COMMENTS AFTER OPERATION | <input type="text"/>  |                      |            |   |  |
| <b>ROUTE 3</b>                  | TIME OUT  | <input type="text"/> | TIME IN    | <input type="text"/>                                  |  |
| NAME OF DRIVER                  | <input type="text"/>  |                      | ROAD STATE | <input type="text" value="DRY / WET / SLUSH / SNOW"/> |  |
| DRIVER COMMENTS AFTER OPERATION | <input type="text"/>  |                      |            |   |  |
| <b>ROUTE 4</b>                  | TIME OUT  | <input type="text"/> | TIME IN    | <input type="text"/>                                  |  |
| NAME OF DRIVER                  | <input type="text"/>  |                      | ROAD STATE | <input type="text" value="DRY / WET / SLUSH / SNOW"/> |  |
| DRIVER COMMENTS AFTER OPERATION | <input type="text"/>  |                      |            |   |  |
| <b>ROUTE 5</b>                  | TIME OUT  | <input type="text"/> | TIME IN    | <input type="text"/>                                  |  |
| NAME OF DRIVER                  | <input type="text"/>  |                      | ROAD STATE | <input type="text" value="DRY / WET / SLUSH / SNOW"/> |  |
| DRIVER COMMENTS AFTER OPERATION | <input type="text"/>  |                      |            |   |  |
| <b>ROUTE 6</b>                  | TIME OUT  | <input type="text"/> | TIME IN    | <input type="text"/>                                  |  |
| NAME OF DRIVER                  | <input type="text"/>  |                      | ROAD STATE | <input type="text" value="DRY / WET / SLUSH / SNOW"/> |  |
| DRIVER COMMENTS AFTER OPERATION | <input type="text"/>  |                      |            |   |  |
| <b>ROUTE 7</b>                  | TIME OUT  | <input type="text"/> | TIME IN    | <input type="text"/>                                  |  |
| NAME OF DRIVER                  | <input type="text"/>  |                      | ROAD STATE | <input type="text" value="DRY / WET / SLUSH / SNOW"/> |  |
| DRIVER COMMENTS AFTER OPERATION | <input type="text"/>  |                      |            |   |  |
| <b>ROUTE 8</b>                  | TIME OUT  | <input type="text"/> | TIME IN    | <input type="text"/>                                  |  |
| NAME OF DRIVER                  | <input type="text"/>  |                      | ROAD STATE | <input type="text" value="DRY / WET / SLUSH / SNOW"/> |  |
| DRIVER COMMENTS AFTER OPERATION | <input type="text"/>  |                      |            |   |  |
| <b>ROUTE 9</b>                  | TIME OUT  | <input type="text"/> | TIME IN    | <input type="text"/>                                  |  |
| NAME OF DRIVER                  | <input type="text"/>  |                      | ROAD STATE | <input type="text" value="DRY / WET / SLUSH / SNOW"/> |  |
| DRIVER COMMENTS AFTER OPERATION | <input type="text"/>  |                      |            |   |  |
| <b>ROUTE 10</b>                 | TIME OUT  | <input type="text"/> | TIME IN    | <input type="text"/>                                  |  |
| NAME OF DRIVER                  | <input type="text"/>  |                      | ROAD STATE | <input type="text" value="DRY / WET / SLUSH / SNOW"/> |  |
| DRIVER COMMENTS AFTER OPERATION | <input type="text"/>  |                      |            |   |  |
| OTHER OPERATIONS                | <input type="text"/>  |                      |            |   |  |
| <b>FOOTWAYS</b>                 | <input type="text" value="PRE SAND / PRE SALT / SNOW CLEARANCE"/>                         |                      |            |   |  |
| TIME OUT                        | <input type="text"/>  |                      | TIME IN    | <input type="text"/>                                  |  |
| <b>CYCLE ROUTES</b>             | <input type="text" value="PRE SAND / PRE SALT / SNOW CLEARANCE"/>                         |                      |            |   |  |
| TIME OUT                        | <input type="text"/>  |                      | TIME IN    | <input type="text"/>                                  |  |

## **ANNEX 5**

**NETWORK TREATMENT ROUTE MAP**

**SEE ATTACHED PDF: GRITMAST.pdf**



## **ANNEX 6**

### **SNOW CLEARANCE ROUTE MAP**

**SEE ATTACHED PDF: Snow Clearance Routes.pdf**

## **ANNEX 7**

### **GRIT ROUTE MAPS 1-10**

**SEE ATTACHED PDF: GRIT\_1.pdf**  
**GRIT\_2.pdf**  
**GRIT\_3.pdf**  
**GRIT\_4.pdf**  
**GRIT\_5.pdf**  
**GRIT\_6.pdf**  
**GRIT\_7.pdf**  
**GRIT\_8.pdf**  
**GRIT\_9.pdf**  
**GRIT\_10.pdf**

## STREETS INCLUDED ON WINTER MAINTENANCE GRITTING ROUTES

### ANNEX 8

|  |  |
|--|--|
| A1036                                      | Beagle Ridge Drive                             |
| A1079 (non trunk sections)                 | Beckfield Lane                                 |
| A1079 (trunk sections) H Agency grit route | Beech Avenue, Bishopthorpe                     |
| A1237 (non trunk sections)                 | Bellhouse Way                                  |
| A1237 (trunk sections) H Agency grit route | Bishopgate Street                              |
| A166 to Stamford Bridge                    | Bishopthorpe Road                              |
| A19 (non trunk sections)                   | Blake Street (T)                               |
| A19 (trunk sections) H Agency grit route   | Bland Lane                                     |
| A59  | Blossom Street                                 |
| A64 (trunk road) H Agency grit route       | Bootham  |
| Acaster Lane                               | Bootham Terrace (T)                            |
| Acomb Road                                 | Boroughbridge Road                             |
| Acomb Wood Drive                           | Bouthwaite Drive (T)                           |
| Acorn Way                                  | Bowness Drive                                  |
| Alcuin Avenue                              | Bradley Lane                                   |
| Algarth Road                               | Bramham Avenue                                 |
| Almsford Road                              | Bramham Road                                   |
| Alness Drive                               | Brecks Lane, Strensall                         |
| Applecroft Road                            | Brecksfields                                   |
| Appleton Road                              | Bridge Road                                    |
| Ascot Way                                  | Bridge Street                                  |
| Asda access road Monks Cross               | Broad Lane, Appleton Roebuck to Acaster Malbis |
| Ashford Place                              | Broadway                                       |
| Ashley Park Road                           | Brockfield Park Drive                          |
| Askham Bar roundabout                      | Brockfield Road                                |
| Askham Bryan Lane                          | Brompton Road                                  |
| Askham Fields Lane                         | Brunswick Street                               |
| Askham Lane                                | Burdyke Avenue                                 |
| Askham Richard road to Angram              | Burnsall Drive (T)                             |
| Askham Richard road to Healaugh            | Burton Green                                   |
| Audax Road                                 | Burton Stone Lane                              |
| B1222 (Naburn)                             | Byland Avenue                                  |
| B1224 (Wetherby)                           | Campleshon Road                                |
| B1228 (Elvington)                          | Carr Lane                                      |
| B1363 (Wigginton)                          | Castle Mills Bridge (Tower Street)             |
| Bad Bargain Lane                           | Cemetery Road                                  |
| Balmoral Terrace                           | Chaloners Road                                 |
| Barbican Road                              | Church Balk, Dunnington                        |
| Barfield Road                              | Church Lane, Bishopthorpe                      |
| Barkston Avenue                            | Church Lane, Wheldrake                         |
| Barons Crescent                            | Church Street, Dunnington                      |

Notes: Not all streets listed will be gritted the entire length.

(T) denotes streets gritted by tow gritter.

## **STREETS INCLUDED ON WINTER MAINTENANCE GRITTING ROUTES**

|  |                                       |
|--|---------------------------------------|
| Clarence Street                              | Fishergate                            |
| Clementhorpe                                 | Flaxman Croft                         |
| Clifford Street                              | Flaxton Road, Strensall               |
| Clifton                                      | Fordlands Road                        |
| Clifton Green                                | Foss Bank                             |
| Clifton Moor/B1363/A1237 access road         | Foss Islands Road                     |
| Clifton Moorgate                             | Fossgate (T)                          |
| Collingwood Avenue                           | Fossway                               |
| Common Lane, Holtby                          | Fourth Avenue                         |
| Common Road, Dunnington                      | Foxwood Lane                          |
| Copmanthorpe Lane, Bishopthorpe              | Front Street, Acomb                   |
| Copmanthorpe Road, Bishopthorpe              | Front Street, Naburn                  |
| Coppergate                                   | Fulfordgate                           |
| Corban Lane, Wigginton (H Agency grit route) | Fulford Cross                         |
| Cornlands Road                               | Fulford Road                          |
| Cowper Lane                                  | Gale Lane                             |
| Crichton Avenue                              | Garfield Terrace                      |
| Cross Moor Lane                              | Garrow Hill Avenue                    |
| Crossfield Crescent                          | George Hudson Street                  |
| Crossways                                    | Gillygate                             |
| Dalton Hill, Wheldrake                       | Glebe Avenue (T)                      |
| Dalton Terrace                               | Glen Road                             |
| Dane Avenue (T)                              | Grants Avenue                         |
| Danebury Drive                               | Grassholme                            |
| Danesfort Avenue                             | Great North Way                       |
| Dauby Lane, Elvington                        | Green Dike                            |
| Davygate                                     | Green Dykes Lane                      |
| Deramore Drive                               | Green Lane, Acomb (T)                 |
| Dodsworth Avenue                             | Green Lane, Clifton                   |
| Driffield Terrace                            | Greengales Lane, Wheldrake            |
| Eason View                                   | Greenshaw Drive                       |
| East Parade                                  | Grimston Bar Park and Ride roundabout |
| Eastfield Avenue                             | Haleys Terrace                        |
| Eastfield Crescent                           | Hallcroft Lane                        |
| Eastholme Drive                              | Hamilton Drive                        |
| Elmfield Avenue                              | Hamilton Drive East                   |
| Elvington Lane                               | Hamilton Drive West                   |
| Enfield Crescent                             | Harcourt Street                       |
| Fairfields Drive                             | Hauling Lane                          |
| Fawcett Street                               | Hawthorn Grove                        |
| Field Lane                                   | Haxby Moor Road                       |
| Fifth Avenue                                 | Haxby Road                            |

Notes: Not all streets listed will be gritted the entire length.

(T) denotes streets gritted by tow gritter.

## **STREETS INCLUDED ON WINTER MAINTENANCE GRITTING ROUTES**

|                            |                               |
|----------------------------|-------------------------------|
| Hazelbush Lane             | Lendal Bridge                 |
| Heath Ride                 | Lindsey Avenue (T)            |
| Hebden Rise (T)            | Link Road, Huntington         |
| Hempland Lane              | Livingstone Street            |
| Heslington Lane            | Longwood Road                 |
| Heslington Road            | Long Ridge Lane               |
| Heworth Green              | Lord Mayors Walk              |
| Heworth Road               | Lords Moor Lane               |
| Heworth Village            | Love Lane                     |
| Hob Moor Drive             | Low Moor Lane                 |
| Hob Moor Terrace (T)       | Low Lane                      |
| Hodgson Lane               | Low Ousegate                  |
| Holgate Road               | Lowther Street                |
| Holly Bank Road            | Lycett Road                   |
| Holly Tree Lane            | Main Street, Askham Bryan     |
| Holtby Lane                | Main Street, Bishopthorpe     |
| Hopgrove Lane South        | Main Street, Copmanthorpe     |
| Horseman Drive             | Main Street, Elvington        |
| Horseman Lane              | Main Street, Fulford          |
| Howard Drive               | Main Street, Heslington       |
| Hull Road                  | Main Street, Hessay           |
| Huntington Road            | Main Street, Knapton          |
| Intake Lane, Bishopthorpe  | Main Street, Naburn           |
| James Street               | Main Street, Poppleton        |
| Jewbury                    | Main Street, Wheldrake        |
| Jockey Lane                | Malton Road                   |
| Kathryn Avenue             | Malvern Avenue (T)            |
| Keble Park North           | Manor Drive North (T)         |
| Keble Park South           | Manor Drive South             |
| Kent Street                | Manor Heath                   |
| Kettlestring Lane          | Maple Avenue                  |
| Kingsland Terrace          | Martello Way                  |
| Kingsway North (north end) | Marygate                      |
| Kingsway West              | Melrosegate                   |
| Knapton Lane               | Merchant Way                  |
| Knavesmire Avenue          | Merchantgate                  |
| Knavesmire Road            | Micklegate                    |
| Lamplugh Crescent          | Middlecroft Drive             |
| Lawrence Street            | Middlethorpe Drive            |
| Layerthorpe                | Middlethorpe Grove            |
| Leeman Road                | Mill Lane, Bishopthorpe       |
| Leeside                    | Mill Lane, Hessay to Rufforth |

Notes: Not all streets listed will be gritted the entire length.

(T) denotes streets gritted by tow gritter.

## **STREETS INCLUDED ON WINTER MAINTENANCE GRITTING ROUTES**

|                                     |   |
|-------------------------------------|---|
| Mill Lane, Heworth                  | Paragon Street                          |
| Mill Lane, Wigginton                | Park Gate                               |
| Millfield Lane, Poppleton           | Park Grove (T)                          |
| Monkgate                            | Parliament Street                       |
| Monks Cross Drive                   | Pavement                                |
| Monks Cross Link                    | Pear Tree Lane                          |
| Monkton Road                        | Peasholme Green                         |
| Montague Road                       | Penleys Grove Street                    |
| Moor Lane, Copmanthorpe             | Philadelphia Terrace (T)                |
| Moor Lane, Dringhouses              | Piccadilly                              |
| Moor Lane, Haxby                    | Poppleton Road                          |
| Moor Lane, Skelton                  | Pottery Lane, Strensall                 |
| Moor Lane, Strensall                | Prices Lane                             |
| Moor Lane, Wigginton                | Princess Road                           |
| Moorcroft Road                      | Pulleyn Drive                           |
| Moorgate                            | Queen Annes Road (T)                    |
| Moorlands Road, Skelton             | Queen Street                            |
| Mount Vale                          | Queen Victoria Street                   |
| Murton Lane, Murton                 | Ramsey Avenue, Bishopthorpe             |
| Murton Way                          | Ramsay Close (T)                        |
| Museum Street                       | Rawcliffe Bar park and ride access road |
| Naburn Designer Park and Ride route | Rawcliffe Drive                         |
| Naburn Lane                         | Rawcliffe Lane                          |
| Navigation Road                     | Ridgeway                                |
| Nessgate                            | Rivelin Way                             |
| New Lane, Huntington                | Rougier Street                          |
| New Road, Hessay                    | Ryecroft Avenue                         |
| Newland Park Close                  | Salisbury Road                          |
| Newland Park Drive                  | Salisbury Terrace                       |
| North Lane, Wheldrake               | Sandy Lane, Stockton On The Forest      |
| North Moor Road, Huntington         | Scarcroft Hill (T)                      |
| Nunnery Lane                        | Scarcroft Road                          |
| Oak Tree Lane                       | School Lane, Askham Richard             |
| Oak Wood                            | School Lane, Copmanthorpe               |
| Oakdale Road                        | School Lane, Heslington                 |
| Oaken Grove                         | Sefton Avenue                           |
| Osballdwick Lane                    | Selby Road                              |
| Osballdwick Link Road               | Sheriff Hutton Road to boundary         |
| Osballdwick Village                 | Shipton Road                            |
| Ostman Road                         | Sim Balk Lane                           |
| Ouse Bridge                         | Skeldergate                             |
| Ox Carr Lane                        | Skeldergate Bridge                      |

Notes: Not all streets listed will be gritted the entire length.

(T) denotes streets gritted by tow gritter.

## **STREETS INCLUDED ON WINTER MAINTENANCE GRITTING ROUTES**

|  |  |
|--|--|
| Sowerby Road (T)                           | Thief Lane                                     |
| St. Denys Road                             | Thompson Drive                                 |
| St. Giles Road                             | Thorganby Road                                 |
| St. Giles Way                              | Top Lane                                       |
| St. Helens Road                            | Tower Street                                   |
| St. James Mount (T)                        | Townend Street                                 |
| St. Leonards Place                         | Towthorpe Moor Lane                            |
| St. Maurices Road                          | Towthorpe Road                                 |
| St. Nicholas Avenue (Naburn Shopping Site) | Tranby Avenue                                  |
| St. Stephens Road                          | Tudor Road                                     |
| Stamford Bridge Road                       | Turnmire Road                                  |
| Station Avenue                             | University Road                                |
| Station Rise                               | Usher Lane                                     |
| Station Road                               | Walmer Carr                                    |
| Station Road, Copmanthorpe                 | Walmgate                                       |
| Station Road, Haxby                        | Water End                                      |
| Station Road, Poppleton                    | Water Lane                                     |
| Stillingfleet Road (B1222)                 | Wentworth Road (T)                             |
| Stirling Road (Clifton Moor)               | West Bank                                      |
| Stockhill Lane, Askham Richard             | West End, Strensall                            |
| Stockton Lane                              | West Nooks                                     |
| Straight Lane, Holtby                      | West Pit Lane                                  |
| Stray Road                                 | West Thorpe                                    |
| Straylands Grove                           | Westfield Lane                                 |
| Strensall Road                             | Westfield Road                                 |
| Sussex Road                                | Westminster Road                               |
| Stuart Road                                | Westlands Grove                                |
| Tadcaster Road                             | Wetherby Road                                  |
| Tang Hall Lane                             | Wheatfield Lane                                |
| Tedder Road                                | Wheldrake (Main Street to boundary at Thicket) |
| Temple Lane                                | Wheldrake Lane (to boundary towards Escrick)   |
| Ten Thorn Lane, Knapton                    | Wheldrake Lane (Wheldrake to Crockey Hill)     |
| Thanet Road                                | Wheldrake Lane (Wheldrake to Elvington)        |
| The Avenue, Clifton                        | Whip Ma Whop Ma Gate (T)                       |
| The Green, Acomb                           | White Rose Way                                 |
| The Mount                                  | Wigginton Road                                 |
| The Stonebow                               | Wilton Rise (T)                                |
| The Village, Haxby                         | Windmill Lane                                  |
| The Village, Skelton                       | Windmill Rise (T)                              |
| The Village, Stockton On The Forest        | Windsor Garth                                  |
| The Village, Strensall                     | Woodlands Grove                                |
| The Village, Wigginton                     | Woodlea Avenue                                 |

Notes: Not all streets listed will be gritted the entire length.

(T) denotes streets gritted by tow gritter.

## **STREETS INCLUDED ON WINTER MAINTENANCE GRITTING ROUTES**

Woodlea Bank

Yarburgh Way

Yearsley Grove

York Road, Acomb

York Road, Askham Bryan

York Road, Askham Richard

York Road, Dunnington

York Road, Elvington

York Road, Haxby

York Road, Naburn

York Road, Strensall

York Road, Wigginton

York Street, Dunnington

Notes: Not all streets listed will be gritted the entire length.  
(T) denotes streets gritted by tow gritter.



# GRIT ROUTE 1

- GRIT** Right James St, Left Layerthorpe, Left onto Foss Islands Rd, Right Navigation Rd, Left Walmgate, Left Foss Islands Rd, turn round at Morrisons roundabout, Left Foss Islands Road, Barbican Rd, Cemetery Rd, Right onto Fulford Rd, Fishergate, Right onto Paragon St, Fawcett St, Kent St.
- TRAVEL** Right onto Cemetery Rd to Fulford Rd.
- GRIT** Left onto Fulford Rd, Right Fulford Cross turn round at School, Right Fulford Rd, Left onto Broadway, Right onto Heslington Lane, Left into Fulfordgate turn round at School, Left onto Heslington Lane, Right onto Fulford Rd, Right Broadway, Heslington Lane, University Rd, Right onto Thief Lane, Right Newland Park Close, Left Newland Park Drive, Left Thief Lane, Right Garrow Hill Avenue, Left onto Hull Rd, Lawrence St, Barbican, Barbican Rd, Heslington Rd, Left onto Green Dykes Lane, Melrosegate to mini roundabout, Right onto Tang Hall Lane, Left onto Fifth Ave (turn round at end), Straight over Tang Hall Lane onto Fifth Ave, across Melrosegate, Right onto Fourth Ave, Right Tang Hall Lane, Right onto Hull Rd.
- TRAVEL** Right onto Melrosegate.
- GRIT** Right onto Alcuin Ave, Right onto Tang Hall Lane, Left onto Osbaldwick Lane, Around Osbaldwick Village, Murton Way to A166, Left to Stamford Bridge turn round at Cost Cutters, TRAVEL back on A166, GRIT Left Dunnington turn round at Main St, Left onto Grimston Bar, Hull Rd to Roundabout, Tranby Ave, Osbaldwick Link, left Hull Rd, Right to Park & Ride, Turn round at Roundabout, left onto Hull Rd, Left Windmill Lane, Left Field Lane, Left Sussex Road, Right onto Crossways, Right Yarburgh Way, Right Deramore Drive, Left Eastfield Cres, Left Field La to Hull Rd.
- TRAVEL** Hull Rd, Left onto Green Dykes Lane, University Rd.
- GRIT** University Rd (from roundabout), Left onto Field Lane, Right School Lane, Right Low Lane, Right Main St, Right Field Lane right at new round about (new bus interchange), right at roundabout, right field lane.
- TRAVEL** Left onto Hull Rd, Right onto Tang Hall Lane.
- GRIT** Melrosegate from Tang Hall Lane to East Parade, East Parade, Left onto Harcourt St, Right onto Fifth Ave, Reverse down Glen Rd, Layerthorpe.
- TRAVEL** Return to Depot.

# GRIT ROUTE 2

- GRIT** Peasholme Green, The Stonebow, Pavement, Coppergate, Left Tower St, Paragon St, Right Barbican Rd, Right Kent St, Fawcett St, Fishergate, Tower St, Skeldergate Bridge, Bishopgate St, Left Clementhorpe turn round J/W Terry Ave, Nunnery Lane, Left Blossom St, The Mount, Right Dalton Terr, Right Holgate Rd, Left Blossom St, Left Queen St, Station Rd, Rougier St, George Hudson St, Left Bridge St, Low Ousegate, Clifford St.
- TRAVEL** Tower St.
- GRIT** Piccadilly, Merchantgate, Walmgate, St Deny's Rd, Right Piccadilly.
- TRAVEL** Coppergate, Low Ousegate, Bridge St.
- GRIT** Micklegate.
- TRAVEL** Blossom St, The Mount.
- GRIT** Scarcroft Rd, Left Bishopthorpe Rd, Nunnery Lane, Prices Lane, Left Skeldergate. Bishopthorpe Rd, Right Campleshon Rd, Right Knavesmire Ave, Brunswick St, Balmoral Terr.
- TRAVEL** Right Bishopthorpe Rd, Campleshon Rd to Knavesmire Ave.
- GRIT** Knavesmire Rd, Right Mount Vale, Left Dalton Terr, Left Driffield Terr, Love Lane, Left Knavesmire Rd, Turn Round in Layby, Left Mount Vale, Tadcaster Rd, Right Middlethorpe Dr, Lycett Rd, Middlethorpe Grove, Right Tadcaster Rd, Left St Helens Rd, Eason View, Leaside, Right West Thorpe, Right Thanet Rd, Right Eason View, Right Chaloners Rd, Right Thanet Rd.
- TRAVEL** Right West Thorpe, Leaside, Right Eason View.
- GRIT** Left Chaloners Rd, Left Moor Lane, Right into Park & Ride Turn Round at Roundabout at Park & Ride Height Barrier, Right Tadcaster Rd, Under A64 to Copmanthorpe, turn round at Fox & Hounds Pub, Tadcaster Rd, Left Pulleyn Dr turn round at end of road.
- TRAVEL** Tadcaster Rd, Left St Helens Rd, Thanet Rd.

# GRIT ROUTE 2 (Cont'd)

- GRIT** Right Danesfort Ave, Left Stuart Rd, Right Tudor Rd, Right Kingsway West, Windsor Garth, Ashford Place, Ascot Way, Right Kingsway West, Left Danesfort Ave, Right Gale Lane, Right Tudor Rd, Hamilton Dr, Right Collingwood Ave, Left Hob Moor Dr, Holly Bank Rd, Right Hamilton Dr, Left Holgate road, Left Acomb Road, Left Moorgate.
- GRIT** Right Hamilton Dr, Right Green Lane, Front St, Gale Lane, Right Foxwood Lane, Left Askham Lane to Ring Road, Turn Round.
- TRAVEL** Askham Lane, Right Foxwood.
- GRIT** Right Bellhouse Way (full loop), Right Acomb Wood Dr, Alness Dr, Left Moor Lane, Right through Layby, Left to Ring Road, Turn Round, Moor Lane, Left Moorcroft Rd, Acorn Way, Rycroft Ave, Grassholme, Left Moor Lane.
- TRAVEL** Right Tadcaster Rd.
- GRIT** Left Sim Balk Lane, Left Main St, Left Bishopthorpe Rd to Campleshon Rd.
- TRAVEL** Bishopthorpe Rd, Left Tower St, Left Piccadilly, Right Merchantgate.
- GRIT** Walmgate to J/W Foss Islands Rd.
- TRAVEL** Return to Depot.

# GRIT ROUTE 3

- GRIT** Left onto James St, Right Lawrence street, Left James St, Right Lawrence street, Right Foss Islands Rd, Jewbury, St Maurice's Rd, Monkgate, Right Foss Bank, Right down slip road.
- TRAVEL** Jewberry, St Maurice's Rd, Monkgate.
- GRIT** Heworth Green, Right Heworth Rd, Left Heworth Village, Left Hempland Lane to Stockton Lane.
- TRAVEL** Left Stockton Lane to Roundabout.
- GRIT** Stockton Lane, Right Algarth Rd, Applecroft, Left Ashley Park Rd, Left Stockton Lane, Left Algarth, Applecroft, Stray Rd, Right Bad Bargain Lane, Fourth Ave, Right Fifth Ave, Right Harcourt St, Mill Lane.
- TRAVEL** Left Heworth Green, round roundabout back to Malton Rd.
- GRIT** Malton Rd, Left Monks Cross, Left Park and Ride, Left Monks Cross right at roundabout, turn around at roundabout at Asda, Left at roundabout, Left Malton Rd, turn around at roundabout, Left Hopgrove Lane South, Left Stockton Lane, Turn around at Holtby Lane End, Stockton Lane, right Straylands Grove, Right Malton Rd, Left Elmfield Ave, Right Monkton Road, Barfield Rd, Sefton Ave, Right Elmfield Ave, Left Monkton Rd, Right Byland Ave, Right Huntington Rd, Right Brockfield Park Dr, Right New Lane.
- TRAVEL** Left Malton Rd, Left Monks Cross.
- GRIT** Right slip road to rear of Asda, turn around at Roundabout, Right Monks Cross, 3<sup>rd</sup> Exit on roundabout to rear of Monks Cross, Second Roundabout, Left A1237, Turn around at Roundabout.
- TRAVEL** Monks Cross, Right at roundabout, Left at Round about,
- GRIT** Right at roundabout, Left Aldi, to entrance of Park & Ride, Left Jockey Lane to New Lane.
- TRAVEL** Left New Lane, Right Brockfield Park Drive, Left Huntington Rd.
- GRIT** JNC of Mini roundabout Byland Ave, Huntington Rd, Right Penleys Grove St, Right Clarence St, Right Lowther St.
- TRAVEL** Right Monkgate

# **GRIT ROUTE 3 (Cont'd)**

**GRIT** Right Lord Mayors Walk, Right Clarence St, Left Wigginton Rd, Left Clifton Moorgate (Bumper Castle), Left Water Lane, Right Brompton Rd, Right Rawcliffe Lane, Right Rawcliffe Dr, Right Water Lane, Left Burdyke Ave, Round Roundabout, Left Burton Green, Right Burton Stone Lane.

**TRAVEL** Right Clifton.

**GRIT** Right Water End. To bottom of Brompton Rd

**TRAVEL** Right Burdyke Ave

**GRIT** Crichton Ave.

**TRAVEL** Right Wigginton Rd to J/W Haxby Rd.

**GRIT** Haxby Rd from Wigginton Rd to Haleys Terr.

**TRAVEL** Return to Depot.

# GRIT ROUTE 4

- GRIT** Gillygate, St Leonards Place, Museum St
- TRAVEL** Lendal Bridge.
- GRIT** Station Rd, Station Ave.
- TRAVEL** Lendal Bridge, Museum St, St Leonards Place.
- GRIT** Bootham, Left Marygate, Left Bootham, Left Bootham Terr, Left Clifton, Clifton Green, Left Water End, Left Westminster Rd, Left The Avenue, Left Clifton Green, Right onto Water End, Right onto Clifton, Right onto Clifton Green, Left onto Water End, Left onto Poppleton Rd, Right Acomb Rd, Left onto West Bank (turn round at end), Left onto Acomb Rd, York Rd, Left at Roundabout, Right onto Front St, Askham Lane, Turn round at roundabout with Foxwood Lane, Right onto Cornlands Rd, Right onto Gale Lane, Right onto St Stephens Rd.
- TRAVEL** Left onto Cornlands rd, Right onto Askham Lane.
- GRIT** Ridgeway, Bramham Ave, Left onto Bramham Rd, Left onto Barkston Ave, Left onto Ridgeway, Right onto York Rd, Right The Green to Askham La, Front St, Left York Rd, turn round at Beckfield La roundabout, Left onto Carr Lane, Left Woodlea Bank turn round, Left Carr Lane, Right onto Boroughbridge Rd, Right onto Carr Lane, Left onto Almsford Rd, Woodlea Ave, Right onto Danebury Ave.
- TRAVEL** Right onto Acomb Green.
- GRIT** Right onto Beckfield Lane, Right onto Ostman Rd.
- TRAVEL** Left onto Danebury Drive, Woodlea Ave, Right onto Almsford Rd, Left onto Carr Lane.
- GRIT** Left onto Boroughbridge Rd, A1237 from Boroughbridge Rd to Copmanthorpe roundabout, Right Askham Bryan, Right Askham Bryan Lane to A1237.
- TRAVEL** Left A1237 to Wetherby Rd.
- GRIT** Right Wetherby Rd, Left Beckfield La, Left Knapton La, Ten Thorn La, Main St, Left A1237, Left Wetherby Rd, Left Bland La.
- TRAVEL** Right onto Knapton La, Left Beckfield La, Right Boroughbridge Rd, Left onto Water End.

# **GRIT ROUTE 4 (Cont'd)**

**GRIT** Right onto Salisbury Rd, Salisbury Terr, Right onto Kingsland Terr, Right onto Garfield Terr, Right onto Livingston St, Right onto Salisbury Terr, Right onto Kingsland Terr, Left onto Leeman Rd to Station Rise.

**TRAVEL** Return to Depot.

# GRIT ROUTE 5

**GRIT** Holgate Rd from The Mount to The Fox Pub, Poppleton Rd, Boroughbridge Rd Jnc with Car Lane.

**TRAVEL** Boroughbridge Rd, Left A1237

**GRIT** Right Wetherby Road to Boundary, turn round, Return to Mill Lane, Left towards Hessay to T Jnc, turn around, back to Wetherby Rd, Left to Rufforth, Right onto Bradley Lane to T Jnc right to Boundary, Turn around and Return to Jnc, to Askham Richard, Right at junction to boundary, turn round and return towards Staggered Crossroads, Right to Buckles Inn, Turn Around, Return to Staggered Cross Roads, Right York Rd to j/w Askham Fields Lane.

**TRAVEL** Right A1237 Roundabout

**GRIT** From Roundabout over A64, Left Manor Heath, School Lane, Left Horseman Lane, Left Horseman Dr, Right Manor Heath, Right Hallcroft Lane, Top Lane Right Merchant Way, Left Flaxman Croft, Right Merchant Way, Left Top Lane, Left Horseman Lane, Main Street, Left Station Rd, Left St Giles Way, 2<sup>nd</sup> Right Barons Crescent, Right St Giles Way, Left Main Street Left Station Rd, Temple Lane over Cross Roads, Cowper Lane to Acaster Malbis, Left Hauling Lane, Acaster Lane to Bishopthorpe, Left into Keble Park North.

**TRAVEL** Right Acaster Lane, Hauling Lane to Mill Lane.

**GRIT** Left Mill Lane, Intake Lane to T Jnc Right to Boundary, Turn Around back to Appleton Rd, Left to Bishopthorpe, Left Bridge Rd, to T Jnc, Turn Around, Back to Appleton Road, Left Main St, Left

**GRIT** Bishopthorpe Rd, Left Church Lane, Left Sim Balk Lane, Right Appleton Rd, Right Copmanthorpe Lane, Turn Around at the end, Return

**GRIT** Right Appleton Rd, Left Maple Ave, Left Montague Rd, Right Acaster Lane, Right Ramsey Ave, Left Montague Rd, Right Acaster Lane, Right Ramsey Ave, Left Montague Rd, Left Lamplugh Cres., Right Lamplugh Cres, Left Keble Park North, Left Acaster Lane to Main Street.

**TRAVEL** Return to Depot.



# GRIT ROUTE 6

- GRIT** Shipton Rd to A1237, turn around roundabout, Shipton Road, Left into New Park & Ride entrance, Left A19, turn round at Benningbrough Rd junction (Sidings Restaurant, 1km past York Boundary).
- TRAVEL** Return on A19.
- GRIT** Left Fairfields Drive, Brecksfields (full loop), Right The Village, Moorlands Rd turn round J/W Corban Lane (Browns Nursery), St Giles Rd.
- TRAVEL** Left Shipton Rd.
- GRIT** Left Rawcliffe Lane, Left Eastholme Drive, Left Howard Drive, Left at Mitre Pub, Left Bowness Drive grit around island, Right Eastholme Drive, Left Green Lane, Left Water Lane, Left Clifton Moorgate, 2nd left Oakdale Rd, Left Clifton Moorgate, Left at roundabout onto Longwood Rd, Rivelin Way, Left Oakdale Rd.
- GRIT** Right Clifton Moorgate
- GRIT** Left Kettlestring Lane, Right Audax Rd, Right Stirling Rd, Right at roundabout turn round at A1237 roundabout, Return on Stirling Rd, round roundabout at Screwfix, Carry on down Stirling Rd, Right Clifton Moorgate, Turn round at A1237, Left Kettlestring Lane, Left Clifton Moorgate, Left Wigginton Rd over Ring Road, Turn Round at Boundary (Reliance Grange).
- TRAVEL** Back down Wigginton Rd.
- GRIT** Left Mill lane, The Village, around roundabout, Left Usher Lane, Left Oaken Grove, Left Moor Lane, Right The Village, Left Westfield Lane, Green Dike, Eastfield Ave, Left York Rd, Left Holly Tree Lane, Right Greenshaw Drive, Left Westfield Lane, Right Walmer Carr, Right Mill Lane, The Village, Right Westfield Lane, Left Greenshaw Drive, Left Westfield Road
- TRAVEL** Right The Village, Right York Road, Right Holly Tree Lane, Right Oak Tree Lane
- GRIT** Left Wheatfield Lane, Left Eastfield Ave, Left York Road, Left Holly Tree Lane, Left Oak Tree Lane, Left Eastfield Avenue.
- TRAVEL** To A1237 Turn Left onto A1237 to Roundabout at Junction With Malton Road.
- GRIT** Malton Road from Junction With A1237 to Heworth Road. ( Inc Bus Lane)
- TRAVEL** Return to Depot.

# GRIT ROUTE 7

- GRIT** Dodsworth Ave from Heworth Green, Fossway, Haleys Terr, Right Haxby Rd, Right Link Road, Turn Around Roundabout, Right to Haxby, Right Station Rd, Left Usher Lane to Boundary, Turn Round Left Station Rd, 2nd Right into West Nooks Loop to Station Rd, Right Towthorpe Rd, Left at Strensall Rd Junction, Left York Rd, West End, Left West Pit La, Middlecroft Dr, Left West End, Right over bridge Haxby Moor Rd to Wigginton, Left The Village, Left Usher Lane return to West End, Left York Rd, Left The Village, Left Sheriff Hutton Rd and Turn Round at Boundary (Second Cattle Grid), Return, Right at Oak Wood, Turn Round at Boundary (Ent High Roans House).
- TRAVEL** Right Sheriff Hutton Rd, Right The Village.
- GRIT** Left Princess Rd, Moor Lane, Left Flaxton Rd to Boundary (Cattle Grid), Turn Round.
- TRAVEL** Return along Flaxton Rd.
- GRIT** Right Lords Moor Lane, Right Brecks Lane, Left Park Gate, Right Heath Ride, Right Thompson Dr, Right Brecks La, Right The Village.
- TRAVEL** Left Princess Rd, Moor Lane.
- GRIT** Right Ox Carr Lane, Strensall Rd, Huntington Rd, Right Link Rd, Turn around at Roundabout, Right Huntington Rd,
- TRAVEL** Left Brockfield Park Dr
- GRIT** Left New Lane, North Moor Rd, Strensall Rd, Right to Stockton on Forest, Towards Warthill, Turn Round at Boundary, Left Through Stockton on Forest, Turn Left to Holtby, Left Towards Warthill, Turn Round at Boundary, Through Holtby Village to A166.
- TRAVEL** Return to Depot.

# GRIT ROUTE 8

- GRIT** Hull Rd from Black Bull, Grimston Bar Roundabout (ALL), Right Elvington Lane, Main St, Over Bridge, Turn Round.
- TRAVEL** Back through Main St.
- GRIT** Right to Kexby (Side of School) to A1079, Turn Round.
- TRAVEL** Back to Elvington, Right to Wheldrake Lane.
- GRIT** Left to Wheldrake, Right at School, Left Main St to Boundary at Thicket Priory (Thorganby), Turn Round.
- TRAVEL** Back to Wheldrake Lane.
- GRIT** Right Wheldrake Lane to School, Turn Round at Junction, Right Main St, Left Towards Escrick, Turn Round at Boundary (Wheldrake Grange).
- TRAVEL** Back to Wheldrake.
- GRIT** Left to Cockey Hill J/W A19.
- TRAVEL** Left A19, Right to Naburn.
- GRIT** Left Naburn Lane to Boundary (Moreby Hall), Turn Round.
- TRAVEL** Back to Naburn Village.
- GRIT** Left in Village to School, Left Naburn Lane to J/W A19, Right to Second Roundabout, Turn Round (Both Roundabouts) Right St Nicholas Ave (around McArthur Glen Circuit), Return on A19, Right Fordlands Rd, Left Crossfield Cres, Right Fordlands Rd, Right Fulford Rd to Heslington Lane.
- TRAVEL** Return to Depot.

# TRAILER MOUNTED GRITTER ROUTE 9

Fulford Cross  
Scarcroft Hill  
St James Mount  
Wentworth Road  
Philadelphia Terrace

Hob Moor Terrace

Wilton Rise  
Windmill Rise  
Green Lane  
Dane Ave  
Manor Drive South  
Hebden Rise  
Bouthwaite Drive  
Burnsall Drive  
Sowerby Road  
Manor Drive North  
Malvern Avenue  
Glebe Avenue  
Lindsey Avenue

Queen Annes Road  
Bootham Terrace  
Blake street  
Davygate  
Park Grove  
Ramsey Close

Whip Ma Whop Ma Gate  
Fossgate

# GRIT ROUTE 10

- GRIT** A59 from A1237 to boundary at Turn Bridge, turn round and return on A59, Right Hessay, Right Main St to boundary. Return on A59, Left Hodgson Lane, Right Station Rd.
- TRAVEL** Left A59, Left A1237
- GRIT** Right Millfield Lane to Poppleton, Left Main St, Left Long Ridge Lane, Right Millfield Lane, Right Great North Way, Left White Rose Way, Return to A1237, Right to A64 at Hopgrove Roundabout. Grit all the way around each roundabout on route.
- TRAVEL** A64 to Grimston Bar.
- GRIT** A1079 to Kexby turn round at Kexby House.
- TRAVEL** Return on A1079 to Dunnington
- GRIT** Right Common Lane, Left Main St to A1079.
- TRAVEL** Right A1079, Left on A64 to A19.
- GRIT** Roundabouts under A64, grit A19 to Escrick turn round in junction opposite the church.
- TRAVEL** Return to depot.

## WINTER MAINTENANCE CITY OF YORK COUNCIL

### FOOTWAY SNOW CLEARANCE & PRECAUTIONARY TREATMENT ROUTES

The following footways are to be cleared of snow as and when necessary:

|                      |                                      |
|----------------------|--------------------------------------|
| Priority Footways    | - Refer to plans for exact locations |
| City centre          | - Various sections see plan          |
| Acomb                | - Front Street, Acomb                |
| Old School Court     | - See plan for section               |
| William Plows Avenue | - See plan for section               |
| Wentworth Road       | - See plan for section               |
| Scarcroft Hill       | - See plan for section               |
| St Helen's Road      | - See plan for section               |

SEE ATTACHED PDF FILES:   GRITCNT1.pdf  
  GRITACO.pdf  
  GRITOSCP.pdf  
  GRITWPA.pdf  
  GRITWRSH.pdf  
  St Helens Rd Footways.pdf

## SALT BIN LOCATIONS 2009/10

ANNEX 11

| LOCATION   | WARD            |
|--|-----------------|
| 15 BECKFIELD LANE                                  | ACOMB           |
| O/S 35/37 RUNSWICK AVENUE                          | ACOMB           |
| ON GRASS VERGE NEAR NO 9 STAITHES CLOSE            | ACOMB           |
| INSIDE SCHOOL GROUNDS BECKFIELD LANE               | ACOMB           |
| ENTRANCE TO CARR JUNIOR SCHOOL OSTMAN ROAD         | ACOMB           |
| KIRK VIEW OUTSIDE 1                                | ACOMB           |
| O/S 30/32 GRANGER AVENUE                           | ACOMB           |
| BECKFIELD LANE OUTSIDE POST OFFICE                 | ACOMB           |
| LOW POPPLETON LANE NEAR SCHOOL ENTRANCE            | ACOMB           |
| MILLGATES AT SIDE OF 16                            | ACOMB           |
| LANGHOLME DRIVE OUTSIDE 70                         | ACOMB           |
| WHEATLANDS GROVE NEAR 1                            | ACOMB           |
| BOROUGHBRIDGE ROAD J/W PLANTATION DRIVE O/S P.O.   | ACOMB           |
| JUTE ROAD O/S 90/92                                | ACOMB           |
| SIM BALK LANE NEAR ENTRANCE TO INFANTS SCHOOL      | BISHOPTHORPE    |
| COPMANTHORPE LANE NEAR ENTRANCE TO JUNIOR SCHOOL   | BISHOPTHORPE    |
| MAIN STREET NEAR LIBRARY                           | BISHOPTHORPE    |
| DAUBY LANE ENTRANCE TO ELVINGTON C E SCHOOL        | WHELDRAKE       |
| MAIN STREET NEAR POST OFFICE (Elv)                 | WHELDRAKE       |
| FRONT STREET O/S POST OFFICE (nab)                 | WHELDRAKE       |
| YORK ROAD NEAR SCHOOL                              | WHELDRAKE       |
| BROAD HIGHWAY NEAR ENTRANCE TO SCHOOL              | WHELDRAKE       |
| MAIN STREET NEAR POST OFFICE                       | WHELDRAKE       |
| HAXBY ROAD IN GROUNDS OF HAXBY ROAD PRIMARY SCHOOL | CLIFTON         |
| HAXBY ROAD NEAR POST OFFICE                        | CLIFTON         |
| GREENCLIFFE DRIVE O/S 16/18                        | CLIFTON         |
| WESTMINISTER ROAD ADJ 47                           | CLIFTON         |
| WATER END J/W GREENCLIFFE DRIVE                    | CLIFTON         |
| O/S NO 6 BURTON AVENUE                             | CLIFTON         |
| HAUGHTON ROAD JUNCTION FIELD VIEW                  | CLIFTON         |
| EVELYN CRESCENT                                    | CLIFTON         |
| POTTERY LANE                                       | CLIFTON         |
| IMPERIAL COURT (ASHTON AVENUE)                     | CLIFTON         |
| MORRELL HOUSE (BURTON ST LANE)                     | CLIFTON         |
| GARDEN FLATS LANE OUTSIDE 24                       | DUNNINGTON      |
| PEAR TREE LANE IN SCHOOL GROUNDS                   | DERWENT         |
| YORK STREET OPP 42                                 | DERWENT         |
| MANOR DRIVE O/S NO 7                               | DERWENT         |
| EASTFIELD LANE OPPOSITE JUNCTION WITH HOLY TREE LA | DERWENT         |
| BURNHOLME AVENUE O/S 50                            | HEWORTH WITHOUT |
| WHITBY AVENUE ENTRANCE TO HEMPLAND SCHOOL          | HEWORTH WITHOUT |
| STOCKTON LANE JCN HEMPLAND LA                      | HEWORTH WITHOUT |
| WOODLANDS GROVE JCN ELMPARK WAY                    | HEWORTH WITHOUT |
| LAWNWAY NEAR 13                                    | HEWORTH WITHOUT |
| BRAMLEY GARTH SIDE OF 52                           | HEWORTH WITHOUT |
| GALTRES ROAD J/W LARCHFIELD                        | HEWORTH WITHOUT |
| BECKWITH CLOSE OPPOSITE 4                          | HEWORTH WITHOUT |
| STOCKTON LANE JCN ASHLEY PARK RD                   | HEWORTH WITHOUT |
| OSBALDWICK LANE ENTRANCE TO DERWENT JUNIOR SCHOOL  | OSBALDWICK      |
| JUNCTION OF MURTON WAY/MURTON GARTH                | OSBALDWICK      |

**LOCATION****WARD**

---

|  |                          |
|--|--------------------------|
| MURTON WAY OUTSIDE PRIMARY SCHOOL                  | OSBALDWICK               |
| HAMBLETON AVENUE IN SCHOOL GROUNDS                 | OSBALDWICK               |
| BROUGHTON WAY JUNCTION WITH OSBALDWICK LANE        | OSBALDWICK               |
| ANNAN CLOSE ADJ 9                                  | DRINGHOUSES & WOODTHORPE |
| SPEY BANK J/W ANNAN CLOSE                          | DRINGHOUSES & WOODTHORPE |
| EDEN CLOSE J/W MOOR LANE                           | DRINGHOUSES & WOODTHORPE |
| JCN NEAR MOOR LANE WITH JXN OF MOORCROFT           | DRINGHOUSES & WOODTHORPE |
| NAIRN CLOSE NEAR VENT COLUMN                       | DRINGHOUSES & WOODTHORPE |
| ORRIN CLOSE O/S 29                                 | DRINGHOUSES & WOODTHORPE |
| SILVERDALE COURT NEAR LAMP COLUMN 1                | DRINGHOUSES & WOODTHORPE |
| WORDSWORTH CRES - PATH ACROSS GREEN OPP LITTER BIN | DRINGHOUSES & WOODTHORPE |
| SUMMERFIELD ROAD NEAR 33                           | DRINGHOUSES & WOODTHORPE |
| LOWICK OPPOSITE 7                                  | DRINGHOUSES & WOODTHORPE |
| SUMMERFIELD ROAD AT ENTRANCE TO PRIMARY SCHOOL     | DRINGHOUSES & WOODTHORPE |
| ALNESS DRIVE OPPOSITE 53                           | DRINGHOUSES & WOODTHORPE |
| DEVERON WAY O/S NO 12                              | DRINGHOUSES & WOODTHORPE |
| NEVIS WAY NEAR NO 14                               | DRINGHOUSES & WOODTHORPE |
| HILLCREST GARDENS NEAR J/W HOB MOOR TERRACE        | DRINGHOUSES & WOODTHORPE |
| MIDDLETHORPE GROVE J/W THE SPINNEY                 | DRINGHOUSES & WOODTHORPE |
| MIDDLETHORPE GROVE O/S NO 32                       | DRINGHOUSES & WOODTHORPE |
| GANTON PLACE NEAR LAMP COLUMN 2                    | DRINGHOUSES & WOODTHORPE |
| DON AVENUE O/S 34                                  | DRINGHOUSES & WOODTHORPE |
| DON AVENUE J/W SWALE AVENUE                        | DRINGHOUSES & WOODTHORPE |
| WEST THORPE NEAR 5                                 | DRINGHOUSES & WOODTHORPE |
| LEESIDE O/S NO 7                                   | DRINGHOUSES & WOODTHORPE |
| ST JAMES PLACE NEAR 10                             | DRINGHOUSES & WOODTHORPE |
| ST HELENS ROAD NEAR SCHOOL ENTRANCE                | DRINGHOUSES & WOODTHORPE |
| NORTH LANE ON CORNER                               | DRINGHOUSES & WOODTHORPE |
| ORCHARD WAY J/W ORCHARD CLOSE                      | DRINGHOUSES & WOODTHORPE |
| NORTH LANE NEAR J/W ORCHARD WAY                    | DRINGHOUSES & WOODTHORPE |
| SOUTHFIELD CRESCENT ON BEND                        | DRINGHOUSES & WOODTHORPE |
| HERDSMAN ROAD IN CAR PARK                          | DRINGHOUSES & WOODTHORPE |
| THE HORSESHOE                                      | DRINGHOUSES & WOODTHORPE |
| ROYAL CHASE  | DRINGHOUSES & WOODTHORPE |
| HESLINGTON ROAD ENTRANCE TO ST LAWRENCES SCHOOL    | FISHERGATE               |
| SANDRINGHAM STREET SIDE OF 17                      | FISHERGATE               |
| FISHERGATE ENTRANCE TO ST GEORGES PRIMARY SCHOOL   | FISHERGATE               |
| BROADWAY OUTSIDE POST OFFICE                       | FISHERGATE               |
| FULFORD CROSS ENTRANCE TO SCHOOL                   | FISHERGATE               |
| FISHERGATE PRIMARY SCHOOL                          | FISHERGATE               |
| JCN THIEF LANE / KEXBY AVENUE                      | FISHERGATE               |
| NORWAY DRIVE SIDE OF 9 DANESMEADE                  | FISHERGATE               |
| MAPLE GROVE AT THE BOTTOM                          | FISHERGATE               |
| MAIN STREET OUTSIDE POST OFFICE                    | FISHERGATE               |
| FULFORD MEWS IN GROUNDS OF 1                       | FULFORD                  |
| DELWOOD OPP 14                                     | FULFORD                  |
| FULFORDGATE OPPOSITE 11                            | FULFORD                  |
| GLEN CLOSE NEAR LAMP POST 1                        | FULFORD                  |
| SCHOOL LANE ENTRANCE TO FULFORD C OF E SCHOOL      | FULFORD                  |
| FORDLANDS CRESCENT ADJ NO 19                       | FULFORD                  |
| SCHOOL LANE ENTRANCE TO HESLINGTON PRIMARY SCHOOL  | HESLINGTON               |
| WALMGATE OUTSIDE POST OFFICE                       | GUILDHALL                |



**LOCATION****WARD**

---

|  |                           |
|--|---------------------------|
| HOPE STREET O/S 44                                 | GUILDHALL                 |
| ST MARGARETS TERRACE TOP OF STEPS                  | GUILDHALL                 |
| TOWNEND STREET J/W PILGRIM STREET                  | GUILDHALL                 |
| TOWNEND STREET J/W DEL PYKE                        | GUILDHALL                 |
| MANSION HOUSE                                      | GUILDHALL                 |
| BOWLING GREEN LANE NEAR COPTON HOUSE               | GUILDHALL                 |
| HUNT COURT O/S NO 2                                | GUILDHALL                 |
| STATION ROAD O/S RALPH BUTTERFIELD PRIMARY SCHOOL  | HAXBY & WIGGINTON         |
| BIRCH LANE SIDE OF 27                              | HAXBY & WIGGINTON         |
| WESTFIELD LANE NEAR WIGGINTON PRIMARY SCHOOL       | HAXBY & WIGGINTON         |
| ROCHE AVENUE INSIDE COMMUNITY CENTRE GROUNDS       | HEWORTH                   |
| GERARD AVENUE NEAR POST OFFICE                     | HEWORTH                   |
| SIXTH AVENUE TANG HALL PRIMARY SCHOOL              | HEWORTH                   |
| THORN NOOK ON GRASSED AREA                         | HEWORTH                   |
| MUNCASTERGATE GRASS VERGE OPPOSITE 3               | HEWORTH                   |
| HEWORTH ROAD IN GROUNDS OF HEWORTH PRIMARY SCHOOL  | HEWORTH                   |
| FOSSWAY NEXT TO NOTICE BOARD                       | HEWORTH                   |
| FOSSWAY END OF CUL DE SAC                          | HEWORTH                   |
| ARRAN PLACE LAMP COLUMN 3                          | HEWORTH                   |
| OUTSIDE GLEN LODGE, SIXTH AVE                      | HEWORTH                   |
| JUBLIEE TERRACE, NEAR ST BARNABAS CHURCH           | HOLGATE                   |
| ALDBOROUGH WAY OPP 72                              | HOLGATE                   |
| CLIVE GROVE J/W HOLLY BANK ROAD                    | HOLGATE                   |
| NURSERY DRIVE NEAR ENTRANCE TO SCHOOL              | HOLGATE                   |
| HOWE HILL ROAD OPPOSITE JUNCTION OF DILYS GROVE    | HOLGATE                   |
| BOUHWAITHE DRIVE NEAR AYSGARTH HOUSE               | HOLGATE                   |
| BIRSTWITH DRIVE OPPOSITE 7                         | HOLGATE                   |
| BURNSALL DRIVE OPPOSITE 6                          | HOLGATE                   |
| BURNSALL DRIVE OPPOSITE 9                          | HOLGATE                   |
| ACOMB ROAD IN GROUNDS OF OAKHAVEN OLD PEOPLES HOME | HOLGATE                   |
| POPPLETON ROAD PRIMARY SCHOOL                      | HOLGATE                   |
| LYNDEN WAY JUNCTION WITH HOBGATE                   | HOLGATE                   |
| WEST BANK NEAR LAMP COLUMN 3                       | HOLGATE                   |
| WINDMILL RISE NEAR WINDMILL                        | HOLGATE                   |
| WINDMILL RISE J/W POPPLETON ROAD                   | HOLGATE                   |
| HAMILTON DRIVE EAST J/W BARBARA GROVE              | HOLGATE                   |
| WELLAND RISE                                       | HOLGATE                   |
| OUTSIDE TALBOT HOUSE, CAMBRIDGE STREET             | HOLGATE                   |
| OUTSIDE DORSET HOUSE, LOWTHER TERRACE              | HOLGATE                   |
| WELBORN CLOSE NEAR 36                              | HULL ROAD                 |
| ALLEN CLOSE NEAR 23                                | HULL ROAD                 |
| FLAXTON AVENUE IN GROUNDS OF RESPITE HOME          | HULL ROAD                 |
| INGLEBOROUGH AVENUE O/S 14                         | HULL ROAD                 |
| BROUGHTON WAY NEAR 29                              | HULL ROAD                 |
| YARBURGH WAY NEAR ENTRANCE TO ARCHBISHOPS SCHOOL   | HULL ROAD                 |
| CROSSWAYS ENTRANCE TO BADGER HILL INFANTS          | HULL ROAD                 |
| GARTH ROAD O/S LIBRARY                             | HUNTINGTON & NEW EARSWICK |
| NORTH MOOR ROAD HUNTINGTON PRIMARY SCHOOL          | HUNTINGTON & NEW EARSWICK |
| HUNTINGTON ROAD O/S HUNTINGTON SCHOOL              | HUNTINGTON & NEW EARSWICK |
| YEARSLEY GROVE J/W HUNTINGTON ROAD                 | HUNTINGTON & NEW EARSWICK |
| WHENBY GROVE NEAR ENTRANCE TO SCHOOL               | HUNTINGTON & NEW EARSWICK |
| HAXBY ROAD ENTRANCE TO JOSEPH ROWNTREE SCHOOL      | HUNTINGTON & NEW EARSWICK |

**LOCATION****WARD**

|   |                           |
|---|---------------------------|
| HAXBY ROAD ENTRANCE TO NEW EARSWICK PRIMARY SCHOOL      | HUNTINGTON & NEW EARSWICK |
| HAWTHORNE TERRACE NEW EARSWICK LIBRARY                  | HUNTINGTON & NEW EARSWICK |
| CHURCH LANE HUNTINGTON, NEAR ENTRANCE TO CHURCH GROUNDS | HUNTINGTON & NEW EARSWICK |
| LOWER EBOR STREET                                       | MICKLEGATE                |
| BISHOPGATE STREET O/S 1                                 | MICKLEGATE                |
| SCARCROFT GREEN NEAR SCARCROFT PRIMARY SCHOOL           | MICKLEGATE                |
| SIDE OF 10 BUCKINGHAM STREET                            | MICKLEGATE                |
| O/S BRACKENHILL ST GEORGES PLACE                        | MICKLEGATE                |
| NORFOLK STREET OPPOSITE 4                               | MICKLEGATE                |
| ST CLEMENTS GROVE                                       | MICKLEGATE                |
| OVINGTON TERRACE O/S SCHOOL GATES NEXT TO BIN           | MICKLEGATE                |
| OVINGTON TERRACE OPP 14/16                              | MICKLEGATE                |
| SCARCROFT HILL J/W WENTWORTH ROAD                       | MICKLEGATE                |
| NUNTHORPE AVENUE ENTRANCE TO SCHOOL                     | MICKLEGATE                |
| BEWLAY STREET OPP 18B                                   | MICKLEGATE                |
| CLEMENTHORPE NEXT TO SUB STATION                        | MICKLEGATE                |
| CLEMENTHORPE JCN TERRY AVE O/S 1                        | MICKLEGATE                |
| CUSTANCE WALK OPP 10                                    | MICKLEGATE                |
| FENWICK STREET BETWEEN 4 & 10                           | MICKLEGATE                |
| FENWICK STREET OPP 51 NEXT TO DOG BIN                   | MICKLEGATE                |
| RICHARDSON STREET O/S 17                                | MICKLEGATE                |
| TECK STREET OPPOSITE 6                                  | MICKLEGATE                |
| BISHOPTHORPE ROAD CAR PARK                              | MICKLEGATE                |
| ST BENEDICTS ROAD OUTSIDE BARSTOW HOUSE                 | MICKLEGATE                |
| GARDENERS CLOSE OPP 25                                  | RURAL WEST YORK           |
| CHURCH CLOSE O/S NO 5 (Ask B)                           | RURAL WEST YORK           |
| SCHOOL LANE (Ask R)                                     | RURAL WEST YORK           |
| MAIN STREET ON GREEN OPPOSITE POST OFFICE (Cop)         | RURAL WEST YORK           |
| MOOR LANE OUTSIDE CEMETERY (Cop)                        | RURAL WEST YORK           |
| MAIN STREET O/S NO 4 (Hessay)                           | RURAL WEST YORK           |
| RIVERSIDE WALK O/S 1 (Nether Pop)                       | RURAL WEST YORK           |
| EBOR WAY JCN ALLERTON DRIVE                             | RURAL WEST YORK           |
| BACK LANE (Rufforth) J/W MAIN STREET                    | RURAL WEST YORK           |
| WETHERBY ROAD NEAR PRIMARY SCHOOL                       | RURAL WEST YORK           |
| THE AVENUE OPPOSITE 1                                   | RURAL WEST YORK           |
| BRADLEY CRESCENT NEAR 1                                 | RURAL WEST YORK           |
| WESTFIELD LANE J/W WESTFIELD CLOSE                      | RURAL WEST YORK           |
| SPRINGFIELD ROAD OPP 33                                 | RURAL WEST YORK           |
| SPRINGFIELD ROAD J/W DIKELANDS LANE                     | RURAL WEST YORK           |
| REIGHTON DRIVE J/W REIGHTON AVENUE                      | RURAL WEST YORK           |
| RAWCLIFFE LANE O/S LIBRARY                              | SKELTON RAWCLIFFE & CW    |
| BRANSHOLME DRIVE OPPOSITE 17                            | SKELTON RAWCLIFFE & CW    |
| SURREY WAY NEAR NO 1                                    | SKELTON RAWCLIFFE & CW    |
| OAKDALE ROAD OUTSIDE LAKESIDE PRIMARY SCHOOL            | SKELTON RAWCLIFFE & CW    |
| EASTHOLME DRIVE NEAR RAWCLIFFE INFANTS                  | SKELTON RAWCLIFFE & CW    |
| OAKDALE ROAD J/W RIVELIN WAY                            | SKELTON RAWCLIFFE & CW    |
| BRECKSFIELDS ENTRANCE TO SCHOOL                         | SKELTON RAWCLIFFE & CW    |
| THE VILLAGE ENTRANCE TO SCHOOL (SOTF)                   | SKELTON RAWCLIFFE & CW    |
| STONE RIGGS S/O 41 (SOTF)                               | STRENSALL                 |
| THE VILLAGE O/S LIBRARY                                 | STRENSALL                 |
| SOUTHFIELDS ROAD O/S HEALTH CENTRE                      | STRENSALL                 |
| JCN NEAR MOOR LANE / FLAXTON RD                         | STRENSALL                 |

**LOCATION****WARD**

---

|   |           |
|---|-----------|
| WEST END NEAR ROBERT WILKINSON SCHOOL               | STRENSALL |
| MIDDLECROFT DRIVE NEAR FOOTBRIDGE                   | STRENSALL |
| DURSTON DRIVE NEAR FOOTBRIDGE                       | STRENSALL |
| CHURCH LANE J/W ST MARYS CLOSE                      | STRENSALL |
| BRADLEY DRIVE SIDE OF 25                            | WESTFIELD |
| BEECHWOOD GLADE O/S 1                               | WESTFIELD |
| FIR HEATH CLOSE O/S 5                               | WESTFIELD |
| ASKHAM CROFT J/W WATERMAN COURT                     | WESTFIELD |
| FOXWOOD LANE J/W ASKHAM LANE                        | WESTFIELD |
| OTTERWOOD LANE NEAR J/W FOXWOOD LANE                | WESTFIELD |
| CORNLANDS ROAD OPP WHITE ROSE PUB                   | WESTFIELD |
| DANESFORT AVENUE J/W MIDDLETON ROAD                 | WESTFIELD |
| PHEASANT DRIVE OPP NO 14                            | WESTFIELD |
| LINET WAY OPP 14/16                                 | WESTFIELD |
| THANET ROAD O/S EDMUND WILSON SWIMMING BATHS        | WESTFIELD |
| WOODFORD PLACE BETWEEN 4 AND 6                      | WESTFIELD |
| KINGSTHORPE OPPOSITE 29/31                          | WESTFIELD |
| DIJON AVENUE ENTRANCE TO LOWFIELD SCHOOL            | WESTFIELD |
| ASKHAM GROVE END OF CUL DE SAC                      | WESTFIELD |
| TENNENT ROAD BETWEEN 56/61                          | WESTFIELD |
| GALE FARM COURT OPPOSITE 23                         | WESTFIELD |
| BACHELOR HILL NEAR 12                               | WESTFIELD |
| VESPER DRIVE OUTSIDE 22                             | WESTFIELD |
| FRONT STREET OUTSIDE VYNER HOUSE                    | WESTFIELD |
| FRONT STREET OUTSIDE LIBRARY                        | WESTFIELD |
| ASKHAM LANE OUTSIDE 186/188                         | WESTFIELD |
| ASKHAM LANE ENTRANCE TO WESTFIELD SCHOOL            | WESTFIELD |
| GRANGE LANE OPPOSITE 60                             | WESTFIELD |
| HOWE STREET JCN SEVERUS STREET                      | WESTFIELD |
| STUART ROAD NEXT TO ENTRANCE TO BIRCH COPSE         | WESTFIELD |
| CHANCERY COURT AT TOP OF CUL-DE-SAC BEFORE NUMBER 1 | WESTFIELD |

## CYCLE PATH/WAY GRITTING – NORTH

| Ref. | Ref. | Location   |
|------|------|--|
| 52   | 1    | James Street Link - Hallfield Road to Hazel Court  |
| 49   | 2    | Foss Islands Path - Hallfield Road to Metcalf Lane Osbaldwick  |
| 48   | 3    | Foss Islands Path - Crichton Ave to Hallfield Road   |
| 6    | 4    | Wigginton Road - Nestle North Freight Access to South Access   |
| 46   | 5    | New Earswick to Nestle North Freight Access  |
| 45   | 6    | New Lane to Monks Cross Park & Ride site   |
| 47   | 7    | Haxby Road / A1237 underpass - western side  |
| 43   | 8    | Haxby Road / A1237 underpass - eastern side  |
| 44   | 9    | Clifton Moorgate - southern path - Centurion Way to Wigginton Road including path around Bumper Castle |
| 39   | 10   | Clifton Moorgate - southern path - Tribune Way into Water Lane to start of off-road path               |
| 37   | 10a  | Clifton Moorgate - southern path - Tribune Way to Centurion Way  |
| 38   | 11   | Clifton Moor link road to Wigginton Road roundabout  |
| 40   | 12   | Clifton Moorgate - northern path - Tesco roundabout to Kettlestring Lane                               |
| 32   | 13   | Water End - ramp off carriageway to Salisbury Road (south of road)                                     |
| 14   | 13a  | Clifton Moorgate - northern path - Kettlestring Lane to end of path nr Water Lane                      |
| 33   | 14   | Clifton Moorgate - southern path - Lakeside School to Oakdale Road East                                |
| 34   | 15   | Clifton Moorgate - southern path - Oakdale Road East to BMW road                                       |
| 35   | 16   | Clifton Moorgate - southern path - BMW road into Water Lane  |
| 36   | 17   | Water Lane between Tribune Way link and Hazelnut Grove   |
| 41   | 18   | Clifton Backies between Woodland Chase and Sutton Way  |
| 42   | 19   | Water End - Ramp off flood bank to Clifton Green ramp  |
| 13   | 20   | Water End - Salisbury Road to end of ramp (north of road)  |
| 12   | 21   | Water End - Landing Lane to Salisbury Road crossing (north of road)                                    |
| 11   | 22   | Water End - Salisbury Road to ramp near Poppleton Rd School (south of road)                            |
| 15   | 23   | Water End - Boroughbridge Road to rail bridge (north of road)  |
| 10   | 24   | Boroughbridge Road - shops between Ouseburn Avenue and Shirley Avenue                                  |
| 9    | 25   | Millfield Lane / Low Poppleton Lane to speed table   |
| 2    | 25   | Low Poppleton Lane - speed table to Boroughbridge Rd   |
| 3    | 25   | Beckfield Lane - Boroughbridge Road to Newlands Drive  |
| 4    | 25   | Beckfield Lane - Newlands Drive to Lidgett Grove   |
| 5    | 25   | Beckfield Lane - Lidgett Grove to Ouseburn Avenue  |
| 6    | 25   | Beckfield Lane - Ouseburn Avenue to Almsford Road  |
| 7    | 25   | Beckfield Lane - Almsford Road to Ostman Road  |
| 8    | 26   | Millfield Lane - Long Ridge Lane to Villa Court  |
| 1    | 27   | Shipton Road / ORR subway northern approach  |
| 29   | 28   | Shipton Road / ORR subway southern approach  |
| 30   | 29   | Manor Lane to Hurricane Way link path  |
| 31   | 30   | Rawcliffe Bar Park & Ride link to Rawcliffe Ings path  |
| 17   | 31   | Rawcliffe Ings - Outer Ring Road to start of copse   |
| 16   | 32   | Rawcliffe Ings - copse section   |
| 18   | 33   | Rawcliffe Ings - Copse to bridge over beck   |
| 19   | 34   | Clifton Ings - Beck crossing to Clifton Bridge   |
| 20   | 35   | Riverside path - Clifton Bridge to Marygate  |

|    |    |  |
|----|----|--|
| 1  | 36 | Path from riverside along western edge of Marygate Car Park and through subway |
| 21 | 37 | Minster Yard   |
| 4  | 38 | Bridge Lane - Wigginton Road to Footbridge                                     |
| 22 | 39 | Monkgate - shared use path roundabout west of roundabout                       |
| 27 | 40 | Heworth Green - shared use path from new junction to Monkgate Roundabout       |
| 28 | 41 | James Street Link - Morrisons side full length of shared use                   |
| 54 | 42 | James Street Link - Layerthorpe to Hallfield Road                              |
| 53 | 53 | Heworth Green - shared use path from new junction to Monkgate Roundabout       |
| 50 | 50 | James Street Link - Morrisons side full length of shared use                   |
| 51 | 51 | James Street Link - Layerthorpe to Hallfield Road                              |
| 14 | 14 | Fishergate Bar   |
| 15 | 15 | Walmgate Bar   |

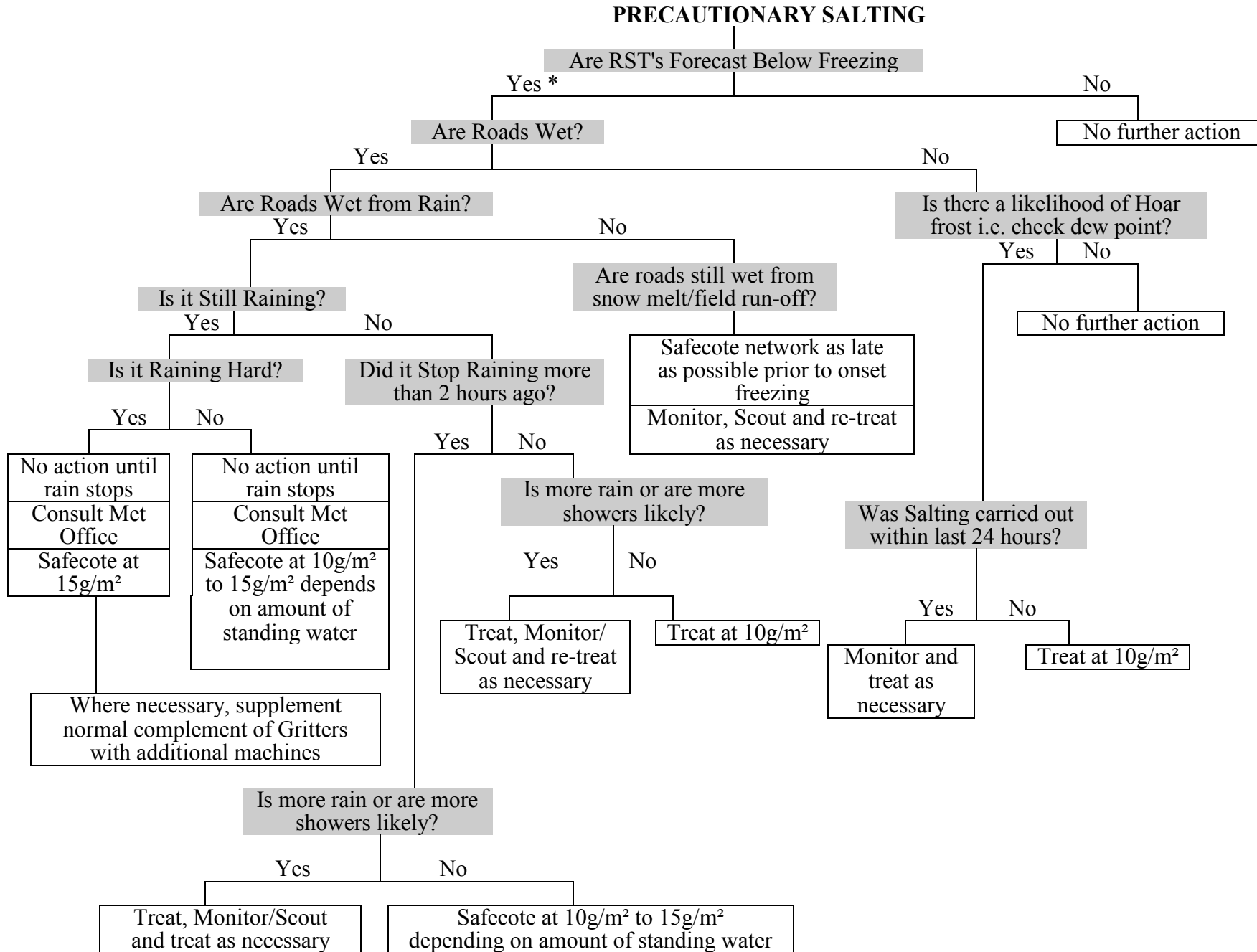
FOR MAP SEE ATTACHED PDF FILE: GRIT09N.pdf

## CYCLE PATH/WAY GRITTING – SOUTH

| Ref      | Ref | Location   |
|----------|-----|--|
| 93       | 1   | Barbican path - Barbican Road to Fishergate Bar  |
| 92       | 2   | Barbican path - Kent Street to Paragon Street  |
| 94       | 3   | Retreat Lane   |
| 95       | 4   | Walmgate Stray - Barracks to University  |
| 91       | 5   | Fulford Road - off road path between Police Station and Hospital Fields Road junction  |
| 96       | 6   | Walmgate Stray - path parallel with Heslington Lane  |
| 90       | 7   | Fulford Ings - Broadway West link  |
| 89       | 8   | New Walk - Blue Bridge to St Oswalds Road  |
| **8<br>1 | **9 | Millennium Bridge - curved approach paths on western bank  |
| **8<br>2 | **9 | Millennium Bridge - Butcher Terrace to Maple Grove   |
| **8<br>3 | **9 | Millennium Bridge - curved ramp towards New Walk   |
| 12       | 10  | Barrier - Hospital Fields Road / New Walk junction   |
| 13       | 11  | Steps onto New Walk at Sandringham Street, New Walk Terrace, Grange Garth, Hartoft Street, Farndale Street, Alma Terrace, Frances Street, Ambrose Street |
| 88       | 12  | New Walk - Tower Street to Blue Bridge   |
| 85       | 13  | Link between Nunnery Lane and Prices Lane  |
| 80       | 14  | Terry Avenue - ramp from Bishopthorpe Road to Skeldergate  |
| 11       | 15  | Barrier - Terry Avenue / Ramped path junction  |
| 79       | 16  | Bishopthorpe Road - opposite former Terrys site  |
| 10       | 17  | Barrier - Bishopthorpe Road / Knavesmire junction  |
| 78       | 18  | Racecourse - right angled bend to Bishopthorpe Road  |
| 9        | 19  | Barrier - Knavesmire / Bustardthorpe Junction  |
| 77       | 20  | Racecourse path - Green Lane to bottom of slope where anti-skid starts   |
| 8        | 21  | Barrier - Knavesmire / Green Lane junction   |
| 76       | 22  | Green Lane - section between two racetracks  |
| 75       | 23  | Green Lane - changing rooms to racetrack   |
| 74       | 24  | Path around periphery of new York College site and into Sim Balk Lane to changing rooms  |
| 70       | 25  | Askham Bar access to Moor Lane   |
| 71       | 25  | Moor Lane to Tadcaster Road  |
| 72       | 25  | Tadcaster Road to former York College access (north of rdbt)   |
| 73       | 25  | Former York College access to Tadcaster Road (south of rdbt)   |
| 69       | 26  | Tadcaster Road - ECML bridge to Askham Bar P&R   |
| 56       | 27  | Lomond Ginnel - Moor Lane to Lowick  |
| 58       | 28  | Ashbourne Way to Bellhouse Way   |
| 57       | 29  | Bellwood Drive shared use path   |
| 59       | 30  | Bellhouse Way - Bellwood Drive to Acorn Rugby Club field   |
| 60       | 31  | Acorn Rugby Club - path along western edge to Foxwood Lane   |
| 62       | 31a | Acorn Rugby Club - path around southern and eastern edge to Kingsway West crossing   |
| 61       | 32  | Foxwood Lane to Chesney Fields   |
| 63       | 33  | Hob Moor - Kingsway West to ECML Subway  |
| 64       | 34  | Hob Moor - Link to Green Lane past Hob Moor School   |
| 55       | 35  | Cross Street, Acomb  |

|    |    |   |
|----|----|---|
| 65 | 36 | Hob Moor - Link to Hob Moor Drive   |
| 66 | 37 | Little Hob Moor - ECML subway to Tadcaster Road                                   |
| 67 | 38 | Tadcaster Road - Toucan to Knavesmire Road crossing (Knavesmire side of road)     |
| 68 | 39 | Little Knavesmire   |
| 87 | 40 | Mount Vale - off road path from Albemarle Road to the point where it rejoins road |
| 86 | 41 | The Mount - off road path from Scarcroft Road to Albemarle Road                   |
| 84 | 42 | Scarcroft Green   |
| 26 | 43 | Cinder Lane - NRM to Wilton Rise Footbridge                                       |
| 25 | 44 | Marble Arch shared use subway and approaches at either end                        |
| 24 | 45 | Post Office Lane  |
| 23 | 46 | Riverside path between Lendal Bridge and Jubilee Terrace                          |
| 5  | 47 | Tanners Moat - gap through to Rougier Street                                      |
| 2  | 47 | Scarborough Bridge - steps on Marygate side                                       |

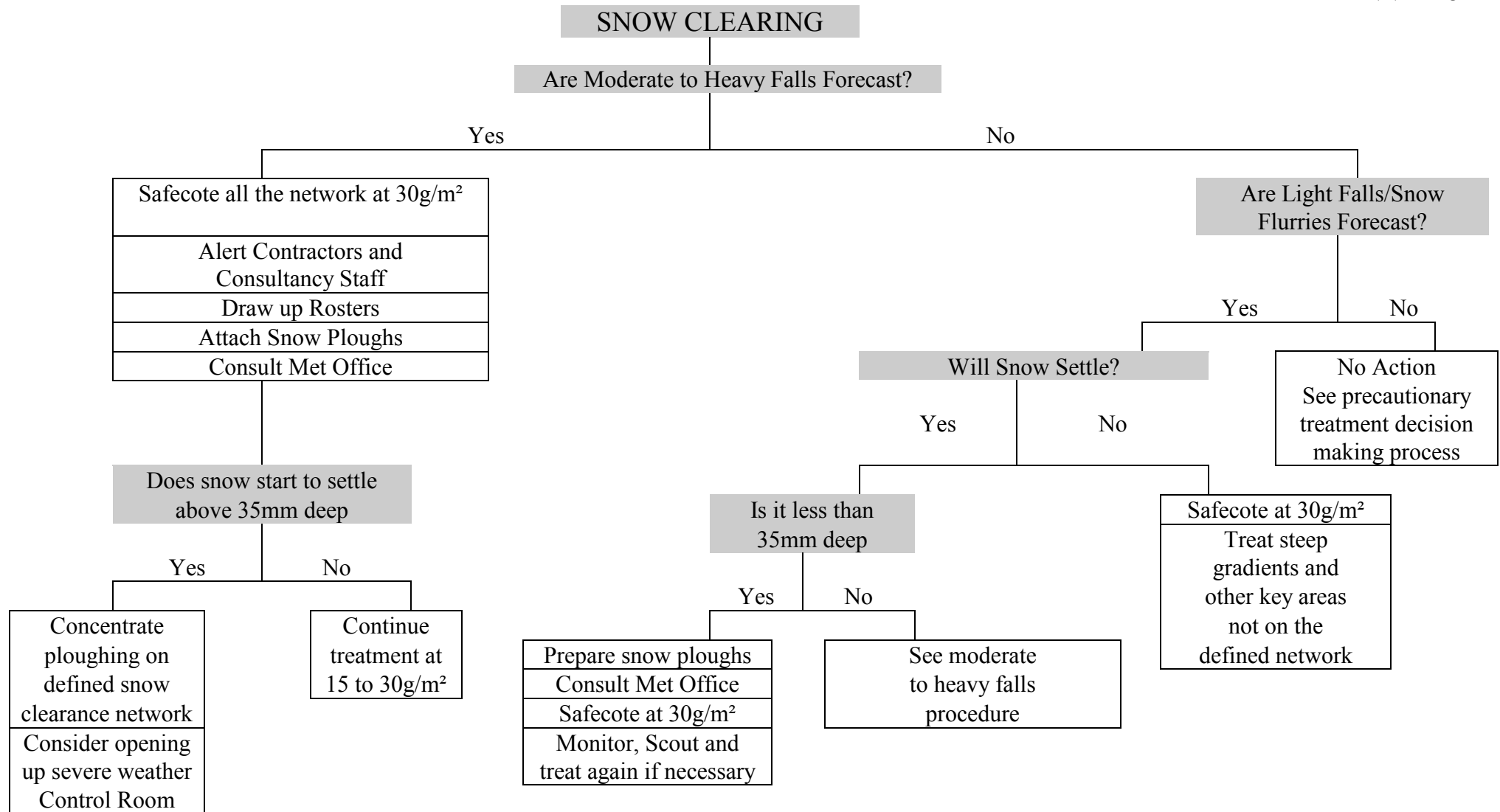
FOR MAP SEE ATTACHED PDF FILE: GRIT09S.pdf





# WINTER MAINTENANCE - DECISION MAKING PROCESS - SNOW CLEARING

ANNEX 13



OPEN ROAD - DEFINITIONS OF TERMS USED IN OPEN ROAD FORECASTS.

|                   |   |
|-------------------|---|
| ACCRETION         | The build-up of snow on objects such as overhead cables, road signs and tree branches. It occurs when wet snow, with temperatures close to freezing, is accompanied by a strong wind. The wet snow freezes on to objects under pressure of the wind. The build up of snow can be quite large, and can cause damage to cables and trees.             |
| AIR FROST         | This occurs when air temperatures (measured between 1 and 2 metres above ground) fall below 0°C.  |
| BLACK ICE         | Clear ice forms on roads due to the freezing of standing water. Occasionally it may be formed by the transformation of hoar frost, under pressure from car tyres. The name black ice is used, as the road blacktop can be seen through the clear ice. The term is much beloved by the media, but is used less frequently in road weather forecasts. |
| BLUSTERY          | Used to describe showers which are accompanied by strong gusts of wind.   |
| CLIMATIC DOMAIN   | An area of a county with broadly similar climatic characteristics, e.g. an urban area, or a high-level area, or a coastal area (see FORECAST SITE).   |
| CONDENSATION      | This is the change of state of water vapour to liquid water, thus forming a thin film or mist of water on surfaces such as roads. During the process, heat is released (see DEW POINT).   |
| CONFIDENCE FACTOR | Used by weather forecast organisations to give guidance to highway engineers on the likelihood of forecasts having to be subsequently amended. Confidence HIGH means that amends are unlikely, and confidence LOW that amends are likely. Some use is made of MEDIUM confidence, although usage is discouraged as it can be confusing.              |
| DAMPED            | This is the thermal map type that occurs on cloudy, windy nights. Temperature differences along a stretch of road are at a minimum (see THERMAL MAP).   |
| DEPOSITION        | This term covers the change of state from water vapour to ice without going through the liquid water stage (see HOAR FROST).  |
| DEW               | Liquid water formed on a surface by condensation from the atmosphere.   |
| DEW POINT         | The temperature to which a sample of air must be cooled for condensation to take place. Dew point can be measured directly by instrumentation, e.g. road sensors.   |

|                          |   |
|--------------------------|---|
| DRIFTING                 | The movement of snow (usually powder snow) under the influence of wind. Snow need not be actually falling for drifting to take place.   |
| DRIZZLE                  | Small droplets which fall from low cloud. Drizzle can last for several hours and cover a large area, or be intermittent and localised.  |
| DRY ADIABATIC LAPSE RATE | The temperature fall with height within a sample of air before it becomes saturated. The rate of fall is 0.98°C per 100 metres (around 3°C per 1,000 feet).   |
| DRY FROST                | The road surface is at 0°C or below, with most roads expected to be dry. However, ice may form due to seepage, burst pipes or in known hollows where moisture persists.   |
| EVAPORATION              | The change of state from water to water vapour. The process takes in heat and causes cooling (see LATENT HEAT ).  |
| EXTREME                  | The thermal map type that occurs on calm, clear nights. Temperature differences along a stretch of road tend to be at their maximum (see THERMAL MAP ).   |
| FLASH FROST              | The rapid build up of hoar frost on roads around sunrise. Roads can change from dry to a significant cover of hoar frost within 15 minutes (see HOAR FROST ).   |
| FOG                      | The suspension of water droplets in air at or close to the ground.  |
| FORECAST SITE            | A road sensor site for which a graphical forecast is provided. It is usual to have one forecast site per climatic domain (see CLIMATIC DOMAIN ).  |
| FREEZING FOG             | Fog which forms when air temperatures are below freezing. The fog droplets remain in the liquid state, but will freeze on contact with trees and other objects, and under some circumstances the road surface (see RIME ).  |
| FREEZING POINT           | The temperature at which pure water will change to ice (although strictly it is the temperature at which ice melts ), in practice, 0.0°C.   |
| FREEZING RAIN / DRIZZLE  | A very dangerous condition where raindrops (from warmer air aloft) fall on to surfaces below freezing, thus freezing instantly and causing widespread ice. Fortunately, rare in the UK. Most likely to occur at the end of a prolonged spell of cold weather.   |
| FREQUENT                 | Used in conjunction with showers. The term frequent showers implies that nearly all areas will catch a shower, and many places will see more than one shower ( see ISOLATED and SCATTERED ).  |
| FROST                    | A generic term to cover temperatures below freezing. Where these temperatures occur describes the type of frost (air frost, ground frost, road frost, etc. ). The rather loose term of 'frost' is rarely used in road weather forecasts without qualifying it. Note that the word frost does not supply deposition on a road surface. The deposition of ice crystals on to a road surface is known specifically as hoar frost (see HOAR FROST). |
| GALE                     | Mean wind speed of 39 m.p.h. or more, or with gusts to 49 m.p.h. or more. A severe gale has a mean wind of 45 m.p.h. or more, or has gusts to 70 m.p.h. or more.  |

|                    |  |
|--------------------|--|
| GROUND FROST       | This term is used to describe occasions when temperatures on the ground (as opposed to in the air ) fall below freezing. The official meteorological definition uses the temperature over short mown grass. The term has little relevance to winter maintenance, which is concerned specifically with road temperatures. The term 'ground frost' heard on media forecasts (TV, radio) does not guarantee that there will also be a road frost. |
| HAIL               | Precipitation in the form of balls or pieces of ice. Usually occurs in showers.  |
| HOAR FROST         | Deposition of water vapour directly as ice on to ground surfaces. The ice forms as white crystals and is usually highly visible. Hoar frost is more common over grass than on roads. Hoar frost on roads may quickly change to clear ice under pressure from car tyres.  |
| ICE                | A generic term for frozen water. In winter maintenance terms usually refers to clear ice on road surfaces (see BLACK ICE ).  |
| ICY PATCHES        | Used in road weather forecasts to indicate ice formation in prone areas only (gutters, dips in the road surface, etc. ).   |
| ICY STRETCHES      | Used in road weather forecasts to indicate more-widespread ice.  |
| ISOLATED           | Used in conjunction with showers. Isolated showers implies that most places will stay dry, but somewhere within the area of coverage a shower may occur (see FREQUENT and SCATTERED )  |
| INTERMEDIATE       | The thermal map type that occurs on nights where cloud cover, wind speed (or both) is variable. Road temperature differences tend to lie between the Damped and Extreme values (see THERMAL MAP).  |
| INTERVAL           | Used to describe cloud breaks or amounts of sunshine, generally of less than one hours duration.   |
| LATENT HEAT        | The quantity of heat absorbed or emitted, without change of temperature, during a change of state of unit mass of a material.  |
| MARGINAL           | This describes nights where the road temperature is expected to be very close to freezing (normally within 1°C ).  |
| PERIOD             | Used to describe the length of cloud breaks or amounts of sunshine, generally of two hours or more duration.   |
| POWDER SNOW        | The form of snow that occurs when air temperatures are well below freezing (-2°C or less ). This form of snow is very fine (like sugar crystals ), drifts very easily, but does not tend to stick to objects (no accretion ). It can be handled by snow blowers. Salt is usually less effective.   |
| PRECIPITATION      | A general term which covers all water (or ice ) which 'falls' from the skies. As well as rain, sleet, snow and hail it also includes dew, hoar frost and fog.  |
| PRECIPITATION TYPE | The individual type of precipitation. In winter maintenance activities this will be one of rain, drizzle, sleet, wet snow, hail, freezing rain and freezing drizzle (see PRECIPITATION ).  |
| PROLONGED          | Used to describe showers which merge together producing a spell of continuous precipitation, generally lasting more than one hour and covering a relatively large area.  |

|                                |  |
|--------------------------------|--|
| RAIN                           | Water droplets which fall from clouds. Rain takes many forms, and can be of many different intensities and durations. Within road weather forecasts there will often be differentiation between rain and showers, the former usually referring to longer-lived but light intensity precipitation, and the latter to short duration but heavy intensity.  |
| RELATIVE HUMIDITY              | This is the amount of actual water vapour held in a sample of air at a given temperature, divided by the maximum amount of water that could be held in that sample of air at that temperature, expressed as a percentage. Within fog or heavy rain, humidities may reach 100%. On a sunny, warm afternoon in summer, humidities may fall to 30%. On an average night in winter, humidities rarely fall below 80% (which is the minimum humidity at which salt crystals will start to absorb water ). |
| RIME                           | Deposition of ice from freezing fog. It is a white form of ice, similar to hoar frost, but has a finer (at times feathery ) structure. On roads, tends to be more of a problem at higher levels than lower levels.   |
| RST                            | Common abbreviation for road surface temperature.  |
| SATURATED                      | Air is said to be saturated when, at a given temperature, it holds the maximum amount of water vapour possible. Any cooling below its current temperature will result in condensation. The relative humidity of saturated air is 100%.   |
| SATURATED ADIABATIC LAPSE RATE | The rate at which air temperature falls with height within saturated air, e.g. within fog or cloud. It is less than the dry adiabatic lapse rate, 0.49°C per 100 metres or around 1.5°C per 1,000 feet.  |
| SCATTERED                      | Used in conjunction with showers. Scattered showers imply that a wide covering of showers across an area is expected. Most places will see a shower but one or two locations may stay dry (see FREQUENT and ISOLATED ).  |
| SEEPAGE                        | Leakage of ground water from roadside verges. Can cause roads to become wet, when otherwise they would have stayed dry, possibly leading to ice formation later.   |
| SHOWER                         | A short spell of precipitation, generally less than an hour, and covering a relatively small area. It can be assumed that a shower will be of rain unless qualified by the words snow, hail or wintry.   |
| SLEET                          | Partially melted snow. If precipitation becomes heavy, sleet may readily turn to snow.   |
| SNOW                           | A form of precipitation where tiny ice crystals bond together into flakes. Snow can be either of the Wet or Powder forms.  |
| SPELL                          | Used to describe the length of cloud breaks or amounts of sunshine, generally between one and two hours duration.  |
| THERMAL FINGERPRINT            | The temperature trace along a road surface (usually recorded by an infrared thermometer during a thermal mapping run ). Regardless of the mean temperature of the trace, it shows the thermal characteristics of the road surface (warm and cold spots ).  |
| THERMAL MAP                    | The representation of relative variations in road surface minimum temperature for each of the three weather categories, presented in colour bands (usually of 1°C ).   |

|                  |  |
|------------------|--|
| THERMAL MAP TYPE | Defined as damped, intermediate or extreme (see previous entries). When using thermal maps in the forecast mode, the weather forecast organisations will send the thermal map type with the ice prediction graph.  |
| TREND            | The likely direction in which the weather is moving over the next two to five days, e.g. 'turning much colder with night frosts' or 'remaining mild and windy'.  |
| WASH OFF         | This occurs when rain is sufficiently heavy to remove salt solution from the road surface.   |
| WATER VAPOUR     | Water in its gaseous state.  |
| WET SNOW         | Snow which falls with air temperatures close to freezing point. It melts easily and can be very sticky (see ACCRETION ). It is more common in the UK than the other variant of powder snow.  |
| WIDESPREAD       | Used to describe showers. Implies that nearly all areas will see a shower and some areas may see more than one (see FREQUENT ).  |
| WINTRY           | This term covers precipitation which contains ice in one of its many variants (sleet, wet snow, hail ). The term is used extensively in media forecasts (e.g. 'wintry showers are expected, showers will turn wintry over hills' ). However, the term is ambiguous in road weather terms and hence any precipitation containing ice will be described more fully, with likely effects on the road. |

## **ANNEX 15**

### **WEATHER STATION LOCATION MAP**

**SEE ATTACHED PDF: Weather Stations 09.pdf**

## **CIRCULATION LIST :**

- Michael Watkins, Acting Engineer, Highway Maintenance Services, EcoDepot, Hazel Court.
- Highway Maintenance Support Team, EcoDepot, Hazel Court.
- Andy Binner, Head of Highway Maintenance Services, EcoDepot, Hazel Court.
- Kersten England, Chief Executive, The Guildhall, St Helen's Square.
- Andrew Waller, Leader of the Council, The Guildhall, St. Helen's Square.
- David Scott, Leader of the Labour Group, The Guildhall, St Helen's Square.
- Ian Gillies, Leader of the Conservative Group, The Guildhall, St Helen's Square.
- Andy D'Agorne, Leader of the Green Party, The Guildhall, St Helen's Square.
- Ken King, Shadow Executive Member for Neighbourhood Services, The Guildhall, St Helen's Square.
- Sally Burns, Director of Neighbourhood Services, EcoDepot, Hazel Court.
- Richard White, Assistant Director (Neighbourhood Services), EcoDepot, Hazel Court.
- Damon Copperthwaite, Assistant Director (City Development and Transport), 9 St Leonard's Place.
- Jim Breen, Emergency Planning Centre, The Guildhall, St Helen's Square.
- Ann Reid, Executive Member for Neighbourhood Services, The Guildhall, St Helen's Sq.
- Reception Staff, Directorate of City Strategy, 9 St Leonard's Place.
- Ashley Mathieson, Facilities Manager, EcoDepot, Hazel Court.
- Russell Armitage, Networks Manager, 4 Museum Street.
- Martin Horner, Civil Engineering Manager, Neighbourhood Services, EcoDepot, Hazel Court.
- Bill Manby, Civil Engineering Supervisor, Neighbourhood Services, EcoDepot, Hazel Court.
- Sean Ensor, Civil Engineering Supervisor, Neighbourhood Services, EcoDepot, Hazel Court.
- Nick Massingham, Civil Engineering Supervisor, Neighbourhood Services, EcoDepot, Hazel Court.
- Steve Burrell, Traffic Control Room, North Yorkshire Police, Fulford Road.
- Matt Beer, Head of Marketing and Communications, The Guildhall, St Helen's Square.
- City Centre Office, Silver Street.
- Russ Broadbent, Parking Services Manager, 9 St Leonard's Place.
- Terry Walker, Public Transport Officer, 9 St Leonard's Place.
- Kevin Hall, Assistant Director Learning Culture & Children's Services (Resource Management), George Hudson Street.
- Val Sutton, Group Manager Community Services, St Anthony's House, Brook Street, York
- Heather Barden, Service Manager Community Services, George Hudson Street
- Dave Carter, Head of Network Management, 9 St. Leonard's Place.
- Winter Maintenance File
- Zoe Burns, Head of Neighbourhood Management, De Grey House
- Dave Batchelor, Civil Engineering Supervisor, Neighbourhood Services, EcoDepot, Hazel Court.
- Members Library, The Guildhall, St Helen's Square.
- John Ross, Engineering Technician, Highway Maintenance Services, EcoDepot, Hazel Court.

TOTAL NUMBER OF COPIES = 35